



CANADA

# Soldier Settlement Board

(Equipment Branch)

---

## HOUSING PLANS FOR PRAIRIE PROVINCES

---

**Commissioners:**

W. J. BLACK, *Chairman*  
MAJOR E. J. ASHTON, D.S.O.  
S. MABER, *Secretary*

Union Bank Building,  
Sparks Street, Ottawa, Ont.

---

Published by authority, Hon. Arthur Meighen (Minister of the Interior), Minister in charge Soldier Settlement.



**T**HE Soldier Settlement Board has endeavored to assist the settler to secure a comfortable home at the lowest possible cost. Building materials and labor are high, and the settler will do well to defer as far as possible the construction of unnecessary buildings and erect at the present time only those structures which are indispensable to the health and comfort of his family.

Plans have been made to meet the needs of the settler who may require a small and inexpensive house in the beginning. Everything in connection with the construction has been standardized, and these buildings can be enlarged without loss of material. Great care has been exercised by the Board's Architect to combine cheapness of construction with utility. Plans and specifications were submitted to a number of leading Pioneer Women in the West, whose suggestions were incorporated.

When the settler is ready to go on his land, he has an opportunity of selecting the type of house he requires, and is given full particulars as to the cost, and the amount of lumber required for construction. Arrangements have been made with 1,250 Lumber Dealers in the West, whereby the settler may procure his lumber at a greatly reduced price. He may erect his own house, or he may ask the Board to do this for him; in any case, construction will be under the supervision of the Board's Architect.

From three to eight days, according to type of building, will be required for erection after material has been delivered.

In the case of group farms, where a number of settlers may propose to locate together in the same district, there

will be a material reduction in the cost of construction.

The Board also plans to assist the settler to erect standard stables and implement sheds in the same way. The settler may obtain a small stable 24' x 12', sufficient for housing two cattle and four horses, erected at an approximate cost of \$200.00. Plans are so drawn that these buildings can be enlarged without loss of material.

By reference to the plans shown on following pages it will be observed that the unit "A" may be easily enlarged to suit the increasing requirements of the settler. There will be no loss of material. The architect has endeavored to suit the convenience and the needs of the average pioneer farmer by giving him a commodious and convenient house at the minimum cost.

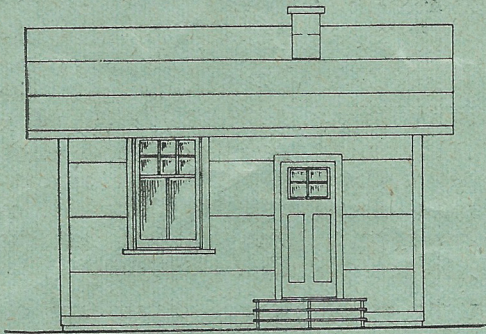
If the settler desires to erect a different type of house from the one described herein, or use materials of a different class from those indicated in this circular, he may do so with the approval of the Board's Architect, who should be addressed to any of the Board's offices in the Prairie Provinces.

It will be very desirable for settlers to erect their own houses, provided they can do so at reasonable cost. In timbered country especially, this no doubt will be practicable.

**Plans and specifications of the four standardized houses will be supplied to settlers free upon application to Branch Offices in Prairie Provinces.**

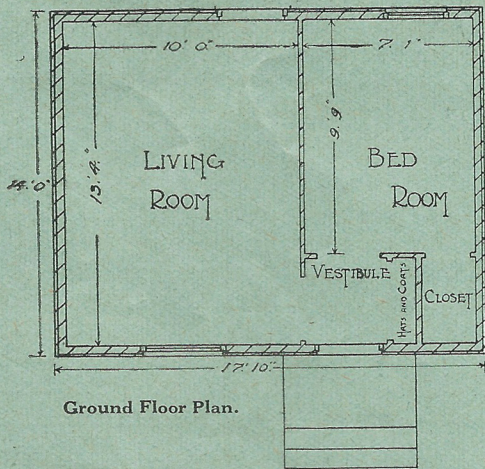


## Type "A" House



Front Elevation

Approximate cost, \$300.00. Dimensions, 17' 10" x 14'

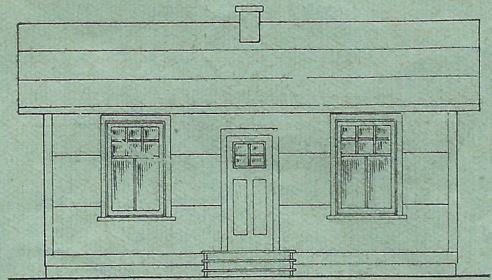


Ground Floor Plan.

## Type "A" Description

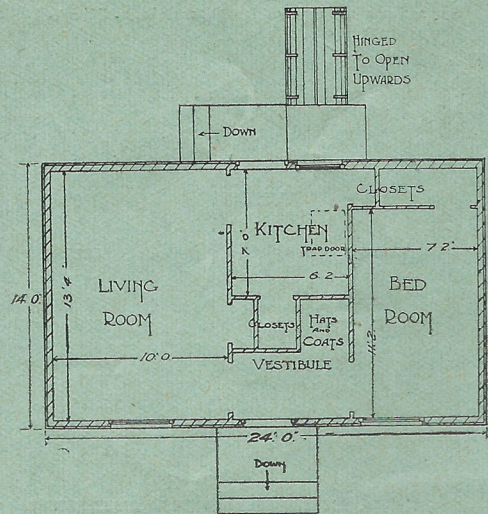
A comfortable two-room house, particularly suited to the needs of a bachelor settler. Approximate price, \$300.00. Time of erection about four days. This cottage is on concrete sills or cedar posts; double floors, with a special building paper between the rough and the finished floors. Walls and roof covered with an approved prepared semi fire-proof roofing. If settler prefers, walls may be finished in clap-board, at small added cost. Inside walls finished with beaver-board and neatly panelled.

## Type "B" House



Front Elevation

Approximate Cost, \$590. Dimensions, 24' x 14'.



Ground Floor Plan.

## Type "B" Description

This cottage is merely an extension of type "A," one room being added and basement excavated. Approximate cost of this cottage, \$590. Time of erection, six days. This house provides a good sized living room, kitchen and bedroom, with small vestibule and lots of closet room. There is an entrance to the small basement from the kitchen and one from the outside.

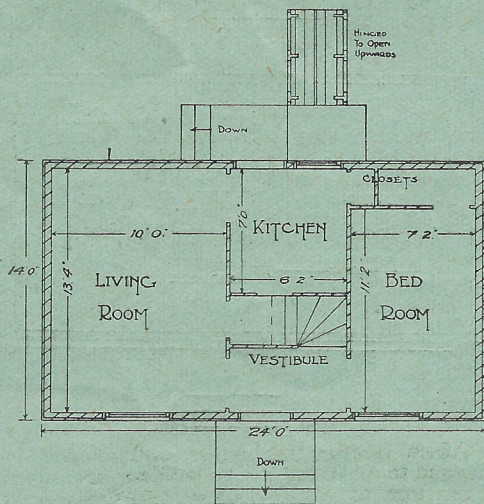


## Type "C" House



Front Elevation

Approximate Cost, \$700. Dimensions, 24' x 14'.

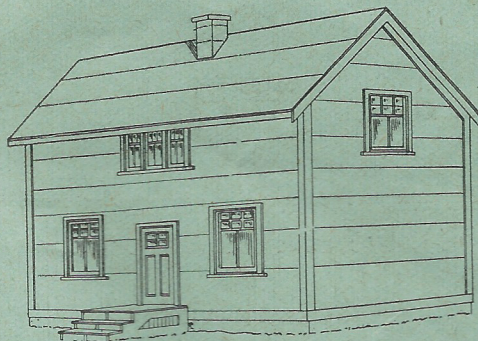


Front Elevation

## Type "C" Description

This house has the same floor plan as type "B," with an additional room upstairs. Total cost, approximately, \$700; time of erection, eight days.

## Type "D" House



Front and Side Elevation.

Approximate Cost, \$775. Dimensions, 24' x 14'.

## Type "D" Description

This house is the same as type "C," but has an additional two rooms upstairs. This house will contain living room, kitchen and parlor downstairs, and three bedrooms upstairs. Approximate cost, \$775. Time of erection, eight days.

## LUMBER

Through the courtesy of the Western Retail Lumbermen's Association, the Board has been able to arrange for very substantial reductions in the price of lumber to the settler. This organization has placed at the disposal of the Board 1,250 lumber yards situated in the Prairie Provinces. These lumber yards will supply the soldier settler upon requisition, with lumber at wholesale cost, plus the bare cost of unloading, handling and other charges. The Association also maintains an Architectural Staff, and this Service Department has been placed at the disposal of the Board.

## USE OF LOGS

Settlers locating in lumber districts are encouraged to make full use, in building operations, of the logs at their disposal, particularly in stables and implement sheds.

Upon request, the name of nearest lumber dealer offering concessions in your district will be supplied by the Provincial Representative.



PROVINCIAL REPRESENTATIVES  
IN  
PRAIRIE PROVINCES.

---

Alberta—

Major F. W. W. Fane,  
Post Office Building,  
EDMONTON, ALTA.

Major John Barnett,  
Beveridge Building,  
CALGARY, ALTA.

Saskatchewan—

Lieut. S. F. Dunlop,  
McCallum Hill Building,  
REGINA, SASK.

E. R. Stevens,  
C.P.R. Building,  
SASKATOON, SASK.

Capt. S. Grant,  
PRINCE ALBERT, SASK.

Manitoba—

D. W. Campbell,  
Post Office Building,  
WINNIPEG, MAN.