



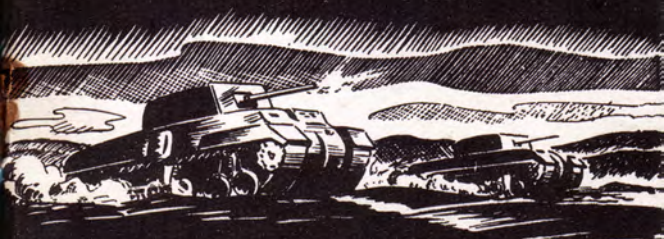
General Information for
the armed forces at

Camp Borden

A. M. J. HYATT

ISSUED BY HERWOOD AVE.

THE BELL TELEPHONE CO. OF CANADA



Look for the



Blue Bell sign

IDENTIFICATION

Name and Rank.....

Reg'l Number.....

Unit.....

Hut No.....

In case of accident notify my next of kin:

Name.....

Address.....
.....

Tel. No.....

So that your friends may reach you easily by telephone, tear this card off and send it home.

Contents

	Page
Long Distance Rates.....	2
Public Telephone Service.....	4
Suggestions for Better Service.....	6
Entertainment.....	7
Theatres	
Dancing	
Active Service Canteen—Barrie	
Sports.....	9
Gymnasium	
Swimming	
Boxing	
Wrestling	
Golf	
Bowling	
Skating and Hockey	
Banks.....	12
Parks.....	12
Bus Service.....	13
Train Service.....	13
Other Items of Interest.....	14
Writing Rooms	
Libraries and Reading Rooms	
Hobbies	
Welfare	
Street Map of Camp.....	16
Names, Addresses and Telephone Numbers....	18
Notes.....	25

Please see Post Card at the back of booklet.



LONG DISTANCE RATES TO NEARBY POINTS

PLEASE CALL BEFORE 7:00 P.M.

There is no need to wait until 7.00 p.m. for calls to the following places. The rates shown below apply at all times—Day or Night—Every Day—from Camp Borden.

Camp Borden to	Day and Night Rates	
	Station-to-Station	Person-to-Person
	Day	Night and Sun.
Alliston	.10	.15
Barrie	.10	.15
Collingswood	.25	.35
Cookstown	.10	.15
Creemore	.10	.15
Dunroon	.15	.30
Elmvale	.25	.35
Everett	.10	.15
Ivy	.10	.15
Midland	.35	.45
Minesing	.10	.15
Moonstone	.30	.40
Mount Albert	.35	.45
Newmarket	.30	.40
Orangeville	.30	.40
Orillia	.35	.45
Oro Station	.25	.35
Penetang	.35	.45
Port McNicoll	.35	.45
Richmond Hill	.40	.60
Roches Point	.25	.35
Schomberg	.25	.35
Severn Bridge	.40	.60
Shelburne	.25	.35
Stayner	.15	.30
Stroud	.15	.30
Sutton	.30	.40
Tottenham	.25	.35
Wasaga Beach	.25	.35
Waubaushene	.35	.45

All rates quoted above are for a three-minute period, except the ten cent rate which is for five minutes. Dominion Government Tax included in the above rates—for the initial period.



LONG DISTANCE RATES TO MORE DISTANT PLACES

Ask Camp Operator for Long Distance.

Camp Borden to	Station-to-Station		Person-to-Person		Camp Borden to	Station-to-Station		Person-to-Person	
	Day	Night and Sun.	Day	Night and Sun.		Day	Night and Sun.	Day	Night and Sun.
	Acton	.50	.40	.75		.65	New Liskeard	1.55	.80
Agincourt	.50	.40	.75	.65	New Toronto	.50	.40	.75	.65
Algonquin Park	.75	.40	1.10	.80	Niagara Falls, Ont.	.70	.40	1.05	.75
Ancaster	.60	.40	.85	.70	North Bay	1.00	.60	1.30	.90
Aylmer, Ont.	.80	.45	1.15	.80	Oakville	.50	.40	.75	.65
Belleville	.85	.45	1.20	.85	Oshawa	.50	.40	.75	.65
Boymanville	.60	.40	.85	.70	Ottawa	1.55	.80	1.95	1.20
Brampton	.45	.40	.65	.60	Owen Sound	.50	.40	.75	.65
Brantford	.65	.40	.90	.70	Parry Sound	.60	.40	.85	.70
Chatham	1.25	.70	1.60	1.05	Peterborough	.60	.40	.85	.70
Cobourg	.70	.40	1.05	.75	Port Carling	.50	.40	.75	.65
Dundas	.60	.40	.85	.70	Port Credit	.50	.40	.75	.65
Dunville	.70	.40	1.05	.75	Preston	.60	.40	.85	.70
Edmonton	5.15	3.15	6.75	4.60	Regina	4.30	2.45	5.75	3.70
Galt	.60	.40	.85	.70	St. Catharines	.65	.40	.90	.70
Grimsby	.65	.40	.90	.70	St. Thomas	.90	.50	1.25	.85
Guelph	.50	.40	.75	.65	Sarnia	1.10	.60	1.40	1.00
Halifax	3.25	1.85	4.20	2.75	Sault Ste. Marie, Ont.	1.80	1.00	2.25	1.45
Hamilton	.60	.40	.85	.70	Stratford	.70	.40	1.05	.75
Harriston	.50	.40	.75	.65	Sudbury	1.10	.60	1.40	1.00
Huntsville	.60	.40	.85	.70	Thord	.65	.40	.90	.70
Islington	.45	.40	.65	.60	Tillsonburg	.75	.40	1.10	.80
Kingston	1.20	.65	1.55	1.05	Toronto	.50	.40	.75	.65
Kirkland Lake	1.70	.90	2.20	1.40	Vancouver	6.25	3.70	8.25	5.70
Kitchener	.60	.40	.85	.70	Welland	.70	.40	1.05	.75
Leamington	1.45	.75	1.85	1.15	Whitby	.50	.40	.75	.65
Lindsay	.50	.40	.75	.65	Willowdale	.45	.40	.65	.60
Listowel	.60	.40	.85	.70	Windsor	1.50	.80	1.90	1.20
London	.80	.45	1.15	.80	Wingham	.65	.40	.90	.70
Meaford	.45	.40	.65	.60	Winnipeg	3.30	1.95	4.30	2.80
Montreal	2.05	1.15	2.60	1.65	Woodstock	.70	.40	1.05	.75

All rates quoted above are for a three-minute period. Dominion Government Tax included in the above rates.



PUBLIC TELEPHONE SERVICE

LOOK FOR THE DIRECTIONAL SIGNS

Army Area

There are telephones conveniently located throughout the Camp in each of the Service Clubs.

Y.W.C.A.—at the North Barrier—Bldg. No. 0.44
for your use and for your friends and
relatives when they visit you.

Y.M.C.A.—on Logie Ave.—Bldg. No. S. 87.

Canadian Legion—Corner of Logie Ave. and Air
Force Rd.—Bldg. No. S. 93.

Salvation Army—Corner of Logie Ave. and Hodgins
St.—Bldg. No. E. 49.

Knights of Columbus—Corner of Hughes Ave. and
Fiset St.—Bldg. No. E. 47.

In addition there are public telephones in Unit
Canteens.

Air Force Area

There are telephone booths in the Library opposite
the Air Force Theatre and in the Canteen Building
opposite the Service Police Hut.

Camp regulations governing canteen hours restrict the
use of telephones located in canteens.

PUBLIC TELEPHONES (EMERGENCY)



If you find it necessary to place an important telephone call when canteens and service clubs are closed, you will find instruction cards at each restricted location directing you to Day and Night telephones.

We suggest you make a note in the "Memo" pages of this booklet of such telephones for future use.

Suggestions

FOR BETTER SERVICE

Copper is busy on the fighting fronts. That's why we can't build new lines to handle the huge volume of Long Distance calls. We are doing our best with the lines we have, but we need your help.

May we ask for your co-operation in limiting Long Distance calls to three minutes and calls to nearby points to five minutes.

There is no advantage in waiting until 7 o'clock on calls to points within 40 miles of Camp Borden, as the rates are the same—Day or Night. You will avoid the 7 o'clock rush and help your fellow soldiers get speedier service when they call more distant points, to which the lower night rates apply.

Please do not flash. If you wish to attract the operator's attention to make another call or for any other reason, hang up the receiver for a few seconds.

Please give your folks at home your
Regimental No.
Unit
Hut No.

so that they can reach you by telephone without delay. Since you may not be readily available, we recommend—Person to Person Service.

SEE THE POST CARD AT THE BACK OF THIS BOOKLET.

ENTERTAINMENT AND SPORTS



THEATRES

CAMP BORDEN

Camp Borden Military Theatre

operated for the benefit of troops stationed at Camp Borden, is located at the foot of Hodgins St. west of the Salvation Army Hut.

Show starts at 1915 Hours.
Sundays at 1430 Hours.

Rates Are Moderate.

Air Force Theatre

R.C.A.F. Area
Moderate Rates For All Ranks.

Service Clubs

Y.M.C.A.—Logie Ave.—Bldg. No. S. 87.
Canadian Legion—Logie Ave.—Bldg. No. S. 93.
Salvation Army—Logie and Hodgins—
Bldg. No. E. 49.
Knights of Columbus—Hughes and Fiset—
Bldg. No. E. 47.

Admission Free To All Ranks.

BARRIE THEATRES

Roxy Theatre.
Imperial Theatre.
Granada Theatre.

Dancing

Camp Borden—Y.W.C.A.
at North Barrier—Tel.
No. 404.

Barrie—Town Hall on
Collier St. (near Gray
Coach Terminal).

—Barrie Arena—Elizabeth St. (Summer
Months).

—Active Service Canteen—Toronto St.
South of Elizabeth.

ACTIVE SERVICE CANTEEN—BARRIE

(Just south of the Red Indian Service Station
on Toronto St.).

Open 2 p.m. to midnight—week days.

“ 11 a.m. to midnight—Saturdays and
Sundays.

Rooms—The attendant will endeavour to
secure accommodation when required.

Cards—Tables and cards available.



Refreshments—at reasonable rates.

Dancing—Mondays and Saturdays.

Special Room for Women Members of the
Armed Forces.

Sports

Sports competitions between units or groups
are arranged through the “Sports Office” on
Hughes Ave., south of Hodgins. If you are
interested in participating in your favorite
sport, see the officer-in-charge of sports.

GYMNASIUM

Camp Gym provided from
Military Theatre funds.
Cor. Hughes and Hodgins.

Admission Free.



SWIMMING An open air pool is located near the Military Theatre.

Admission Free.

R.C.A.S.C. Indoor Pool—No charge to R.C.A.S.C. Members. A small charge to others.

BOXING For those who would care to try out their skill, we suggest you get in touch with the Knights of Columbus or the sports officer at the Camp Gymnasium. If you would like instruction in the art of boxing, see the sports officer at the Camp Gymnasium.

WRESTLING Instruction in wrestling given free at the Camp Gymnasium. See the sports officer in charge.

GOLF Barrie Golf and Country Club—Telephone Barrie 4263. One mile from Barrie on Sunnidale Rd. This road passes in front of the Royal Victoria Hospital just north of the Armouries.

Special seasonal rates to Uniformed Personnel and their families.

BOWLING Camp Borden—Built from Funds provided by Military Theatre—Corner Hughes and Hodgins.

Barrie—Barrie Bowling Academy—116 Dunlop Street.

ICE SKATING AND HOCKEY

Barrie Arena—Elizabeth Street—West of Collegiate.

Telephone—Barrie 3901

Skating—Tuesdays, Thursdays and Saturdays.





BANKS

The Canadian Bank of Commerce operates a branch in Camp Borden near G.H.Q. on Hughes Ave.—Telephone No. 316.

The following Banks operate in Barrie:
Canadian Bank of Commerce—Tel. Barrie 2646
Bank of Toronto—Telephone Barrie 3814
Royal Bank of Canada—Tel. Barrie 4420
Bank of Nova Scotia—Tel. Barrie 2457

Parks

Barrie—Queens Park—behind the Armouries at the head of High Street.

Midhurst—Five miles north of Barrie on Highway 26. One of Canada's Beauty Spots.

Both these parks are ideal places for family picnics when your folks visit you on weekends.

BUS AND TRAIN SERVICE



BUS SERVICE

TRAVERS BUS LINES LTD. and
R.C.A.S.C. BUS LINES

operate from Gray Coach Terminal, Collier St., Barrie, via Allandale, North Barrier, Hughes Ave., Fiset Ave., Logie Ave. to R.C.A.F. Area.

Frequent service with increase in schedule, Fridays, Saturdays and Sundays.

TRAIN SERVICE

C.N.R. and C.P.R.

Ticket offices and stations are located at the head of Grant Street. There is also another C.P.R. station convenient to the R.C.A.F. Area at the corner of Bogg Road and the Air Force Road.

OTHER ITEMS OF INTEREST

WRITING ROOMS

are provided as part of the Services of the
Salvation Army
Knights of Columbus
Canadian Legion
Y.M.C.A.

Writing paper and envelopes are supplied
free of charge.

LIBRARIES AND READING ROOMS

Camp Library—Corner Hughes and Hodgins
operated by Auxiliary Services office
on Logie near Y.M.C.A. There are
over 4,000 books maintained free for
your use.

Y.W.C.A., Y.M.C.A., Canadian Legion,
Salvation Army and Knights of Columbus also
provide Reading Rooms.

Hobbies

When you are away from home, nothing brings
you closer to pre-war atmosphere than to
indulge in your favorite hobby.

If You Are Interested In—

Woodworking—Visit your Y.M.C.A.
Chess — “ “ Salvation Army

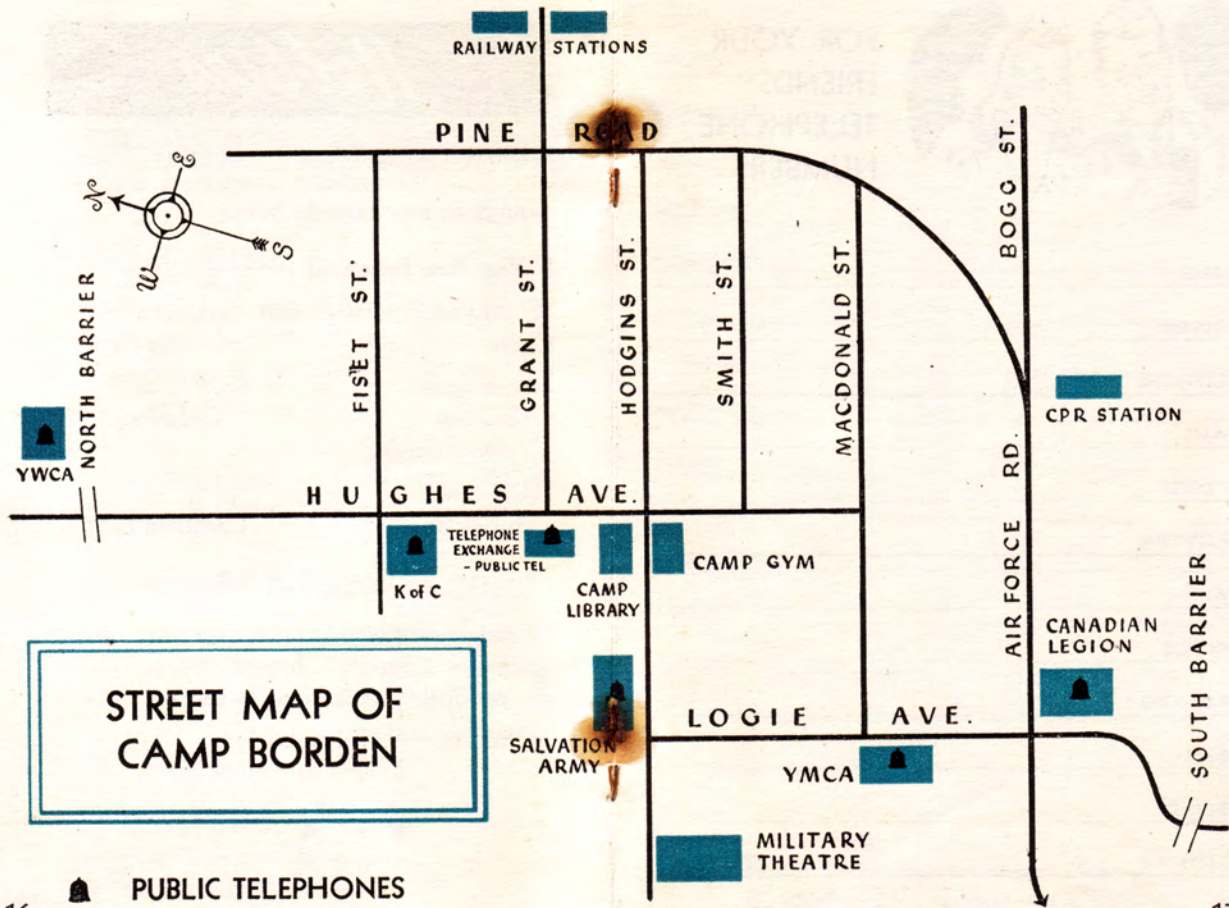
Indoor Sports — “ “ Knights of
(Boxing- Columbus
Wrestling)

Educational
Subjects — “ “ Canadian Legion

WELFARE

Personal problems of soldiers and their
families are handled through the offices of
the national organizations in camp.

They are—Canadian Legion
Knights of Columbus
Salvation Army
Y.M.C.A.
Y.W.C.A.





FOR YOUR
FRIENDS'
TELEPHONE
NUMBERS

NAME

ADDRESS

TELEPHONE

NAME

ADDRESS

TELEPHONE

NAME

ADDRESS

TELEPHONE

NAME

ADDRESS

TELEPHONE

NAME

ADDRESS

TELEPHONE

NAME

ADDRESS

TELEPHONE

NAME

ADDRESS

TELEPHONE

NAME

ADDRESS

TELEPHONE

NAME

ADDRESS

TELEPHONE

NAME

ADDRESS

TELEPHONE

Notes

3
Cents

Post Card

1943

SEPTEMBER

S	M	T	W	T	F	S
				1	2	3
4	5	6	7	8	9	10
11	12	13	14	15	16	17
18	19	20	21	22	23	24
25	26	27	28	29	30	

OCTOBER

S	M	T	W	T	F	S
				1	2	
3	4	5	6	7	8	9
10	11	12	13	14	15	16
17	18	19	20	21	22	23
24	25	26	27	28	29	30
31						

NOVEMBER

S	M	T	W	T	F	S
					1	2
3	4	5	6	7	8	9
10	11	12	13	14	15	16
17	18	19	20	21	22	23
24	25	26	27	28	29	30

DECEMBER

S	M	T	W	T	F	S
					1	2
3	4	5	6	7	8	9
10	11	12	13	14	15	16
17	18	19	20	21	22	23
24	25	26	27	28	29	30
31						

1944

JANUARY

S	M	T	W	T	F	S
						1
2	3	4	5	6	7	8
9	10	11	12	13	14	15
16	17	18	19	20	21	22
23	24	25	26	27	28	29
30	31					

FEBRUARY

S	M	T	W	T	F	S
					1	2
3	4	5	6	7	8	9
10	11	12	13	14	15	16
17	18	19	20	21	22	23
24	25	26	27	28	29	

MARCH

S	M	T	W	T	F	S
					1	2
3	4	5	6	7	8	9
10	11	12	13	14	15	16
17	18	19	20	21	22	23
24	25	26	27	28	29	30
31						

APRIL

S	M	T	W	T	F	S
						1
2	3	4	5	6	7	8
9	10	11	12	13	14	15
16	17	18	19	20	21	22
23	24	25	26	27	28	29
30						

MAY

S	M	T	W	T	F	S
					1	2
3	4	5	6	7	8	9
10	11	12	13	14	15	16
17	18	19	20	21	22	23
24	25	26	27	28	29	30
31						

JUNE

S	M	T	W	T	F	S
						1
2	3	4	5	6	7	8
9	10	11	12	13	14	15
16	17	18	19	20	21	22
23	24	25	26	27	28	29
30						

JULY

S	M	T	W	T	F	S
						1
2	3	4	5	6	7	8
9	10	11	12	13	14	15
16	17	18	19	20	21	22
23	24	25	26	27	28	29
30	31					

AUGUST

S	M	T	W	T	F	S
						1
2	3	4	5	6	7	8
9	10	11	12	13	14	15
16	17	18	19	20	21	22
23	24	25	26	27	28	29
30	31					

Dear.....

I am sending you my telephone and mailing address so that you may be sure of reaching me without delay.

Name and Rank.....

Regimental Number.....

Unit.....Camp.....

Hut Number.....

Telephone Number.....

(Signed)

Please give the above information to the Long Distance operator when placing telephone calls.