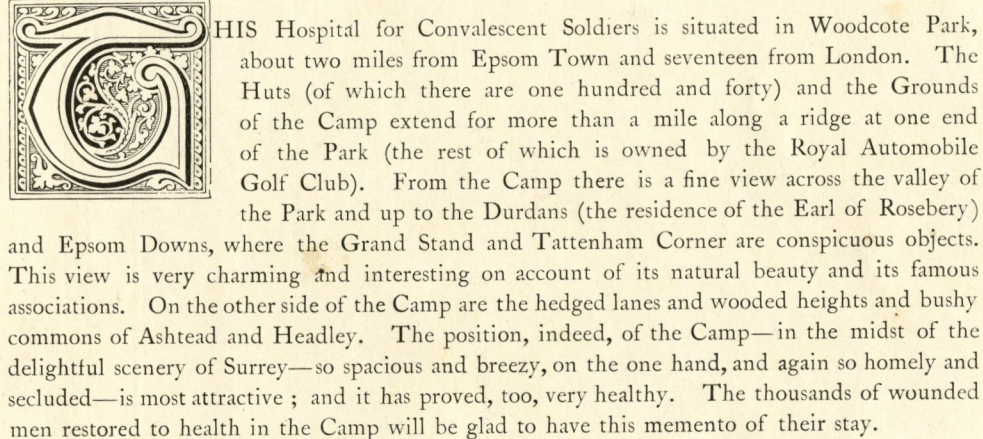


“KING’S MEN, ALL !”



MILITARY CONVALESCENT HOSPITAL  
WOODCOTE PARK, EPSOM

WOODCOTE PARK  
∴ EPSOM ∴



During the first year of the existence of the Hospital (June, 1915, to June, 1916), over 20,600 patients were admitted. Of these, 10,600 were British, 4,500 Canadians, 4,100 Australians, 1,400 from New Zealand, and a few from South Africa. This Imperial character of the Camp—large bodies of men from the Mother-Country, and from Australia, Canada, and New Zealand, living together and daily getting to know and understand one another better—is a striking and unique feature of its composition, and has been an inspiring and valuable influence in the life of the Camp.



OFFICERS, WOODCOTE PARK CONVALESCENT CAMP, JUNE, 1916

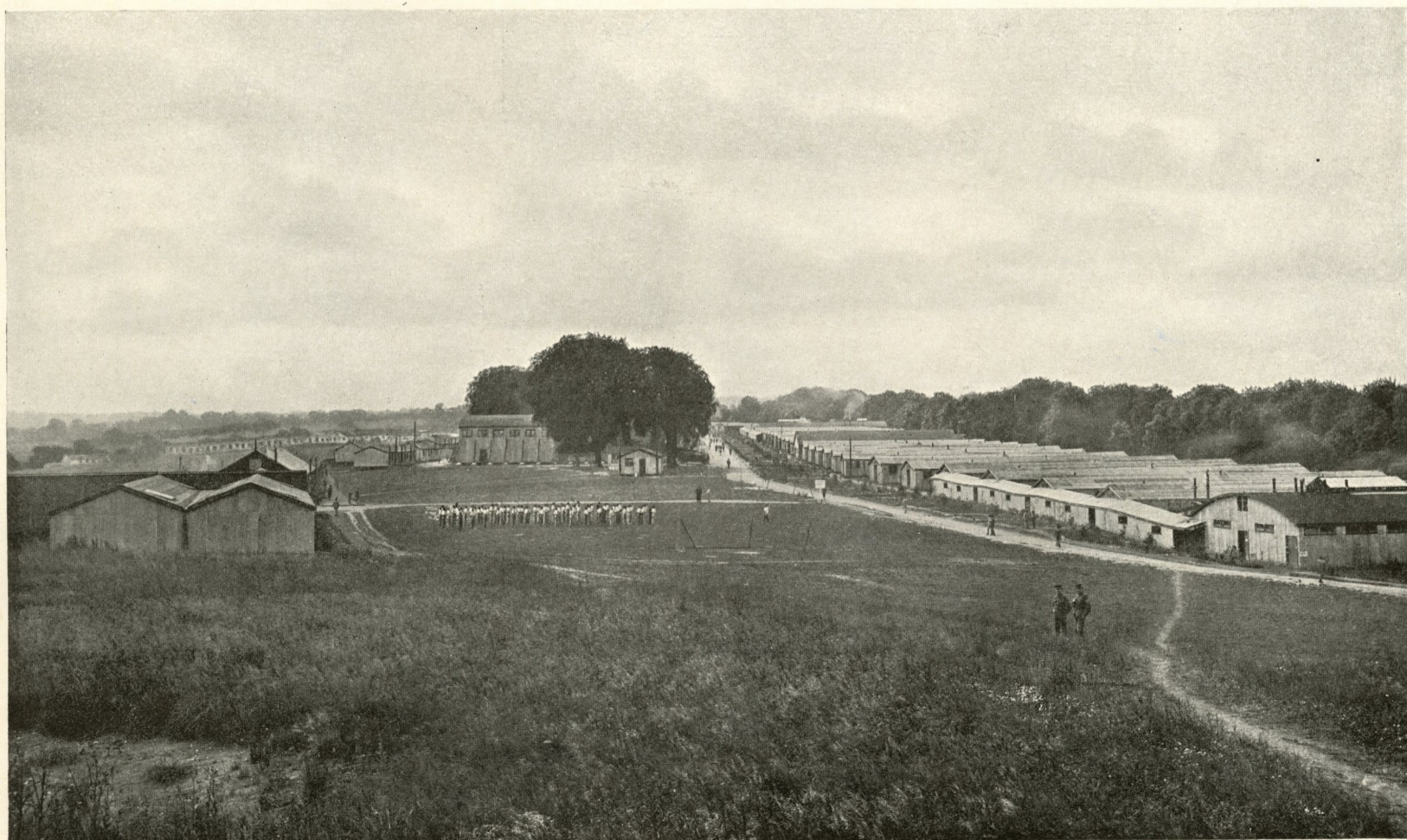
Bassano

*Back Row (from Left to Right):* Capt. N. G. Trelford, C.A.D.C.; Capt. W. J. F. Symons, R.A.M.C.; Capt. G. P. Howlett, C.A.M.C.; Capt. R. Goulden, C.A.M.C.; Capt. R. H. Thomas, C.A.M.C.; Capt. G. R. Prendergast, 1st Royal Munster Fusiliers; Lieut. G. M. Gabb, 2nd Queen's R.W.S.; Lieut. and Quartermaster H. Howell, R.A.M.C.; Capt. J. B. Young, R.A.M.C.; Lieut. J. O. Sidebotham, 1st Cheshire.

*Middle Row:* Lieut. and Quartermaster J. Goodwin, R.A.M.C.; Capt. D. A. Murray, C.A.M.C.; Capt. E. D. Clarke, C.A.M.C.; Lieut. C. Averill, R.A.M.C.; Lieut. L. Dinnis (Special List); Lieut. and Quartermaster W. H. Bird (Special List); Capt. F. W. Rowland, R.A.M.C.; Lieut. H. Saunders, R.A.M.C.; Lieut. R. A. R. Lawry, Canterbury Battalion; Capt. W. L. Hay, R.A.M.C.; Lieut. C. F. N. Harris, Royal Irish Fusiliers.

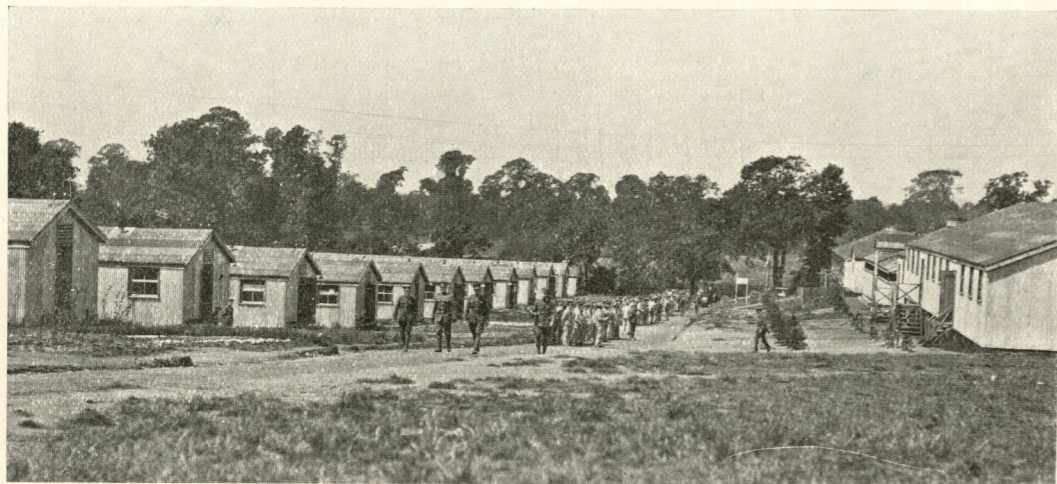
*Front Row:* Capt. R. Heymann, 1st Worcestershire; Capt. Douglas-White, R.A.M.C.; Major M. B. Stacey, 5th Queen's; The Right Hon. Lord Killanin; Lieut.-Col. C. R. Kilkelly, C.M.G., M.V.O., Grenadier Guards; Major L. E. W. Irving, D.S.O., C.A.M.C.; Capt. and Adj. D. E. Macpherson, 3rd Gordon Highlanders; Capt. J. C. Hill, Canterbury Battalion; Capt. M. V. Southey, A.A.M.C.

(Capt. A. W. Tofft, A.A.M.C., and Lieut. E. N. Rowe, Hampshire Regt., were absent).



THE CAMP

Bassano



MAIN ENTRANCE TO CAMP, AND "A" DIVISION

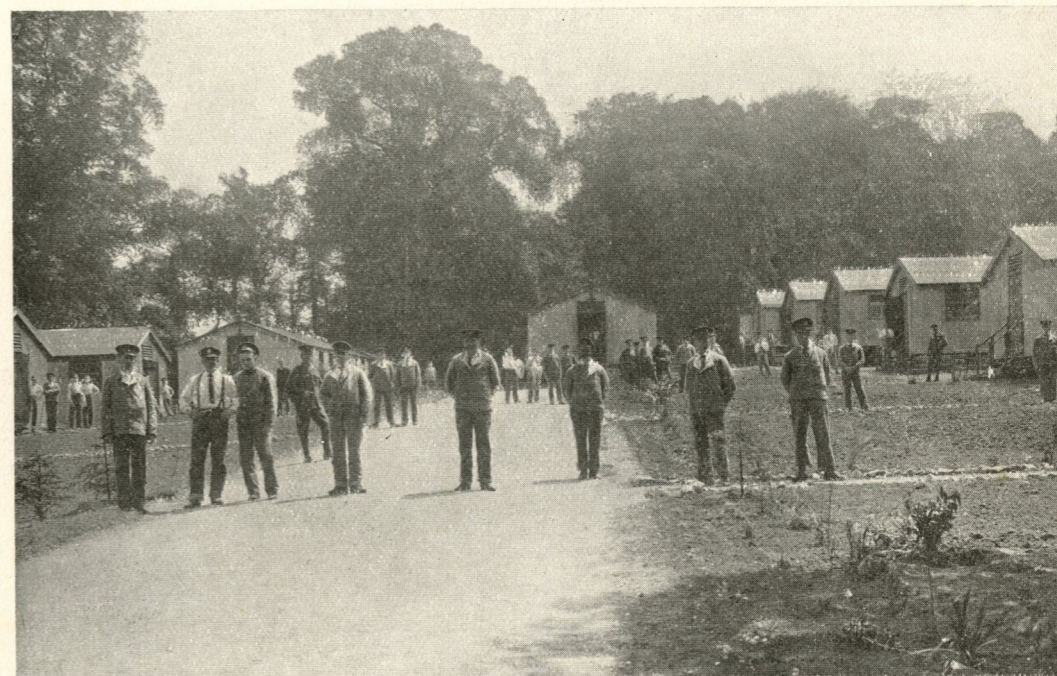


"C" AND "D" DIVISIONS



"E" AND "F" DIVISIONS

*Bassano*



"G" AND "H" DIVISIONS



THE WARRANT OFFICERS AND SERGEANTS OF THE STAFF

*Bassano*



THE MASSEUSES



THE COOKS



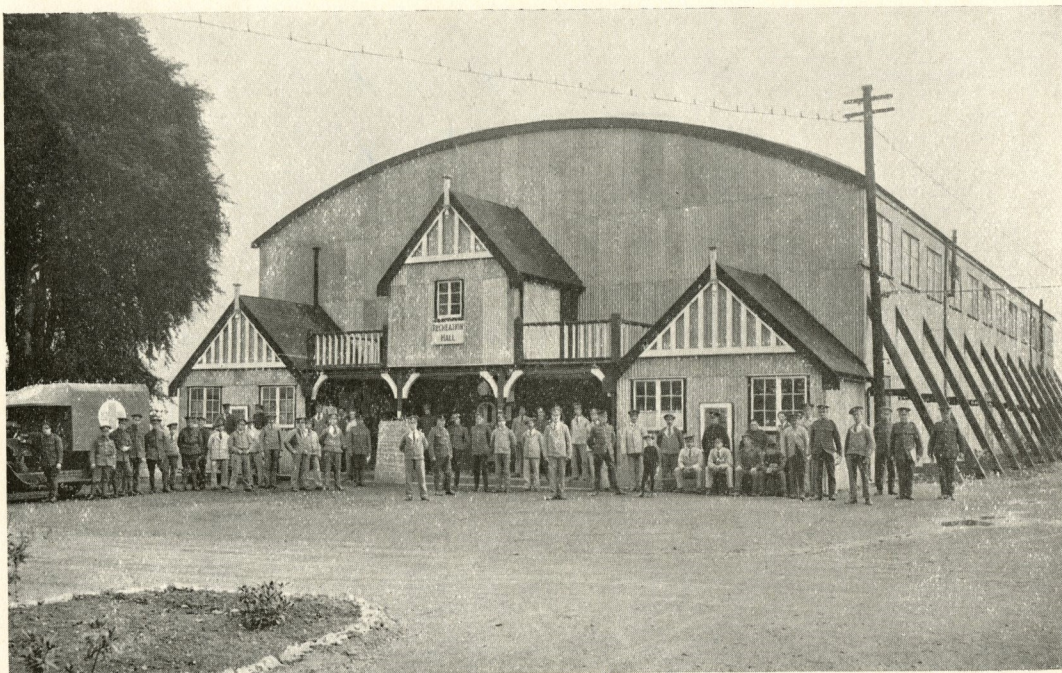
INTERIOR OF A MASSAGE HUT

*Bassano*

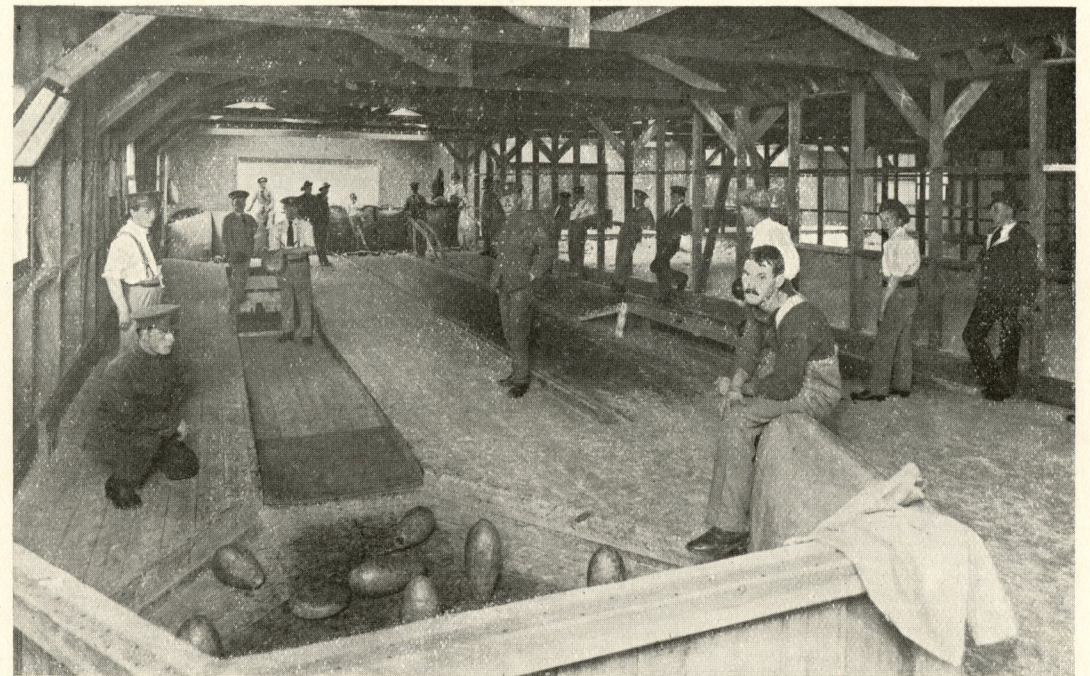


INTERIOR OF A KITCHEN

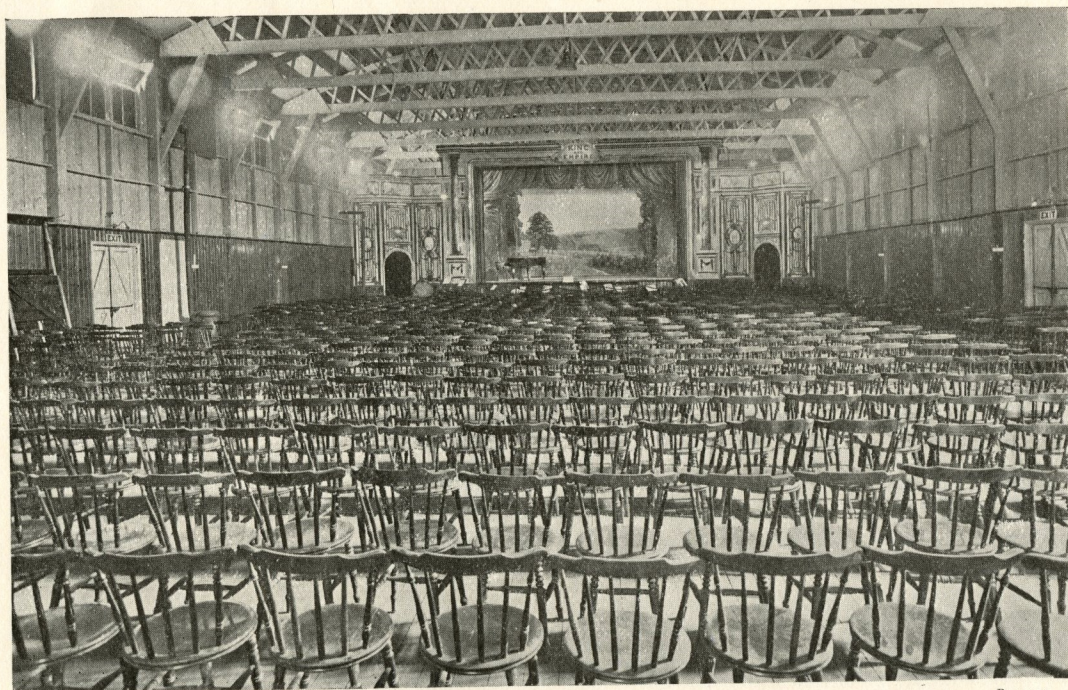
*Bassano*



THE RECREATION HALL (EXTERIOR)

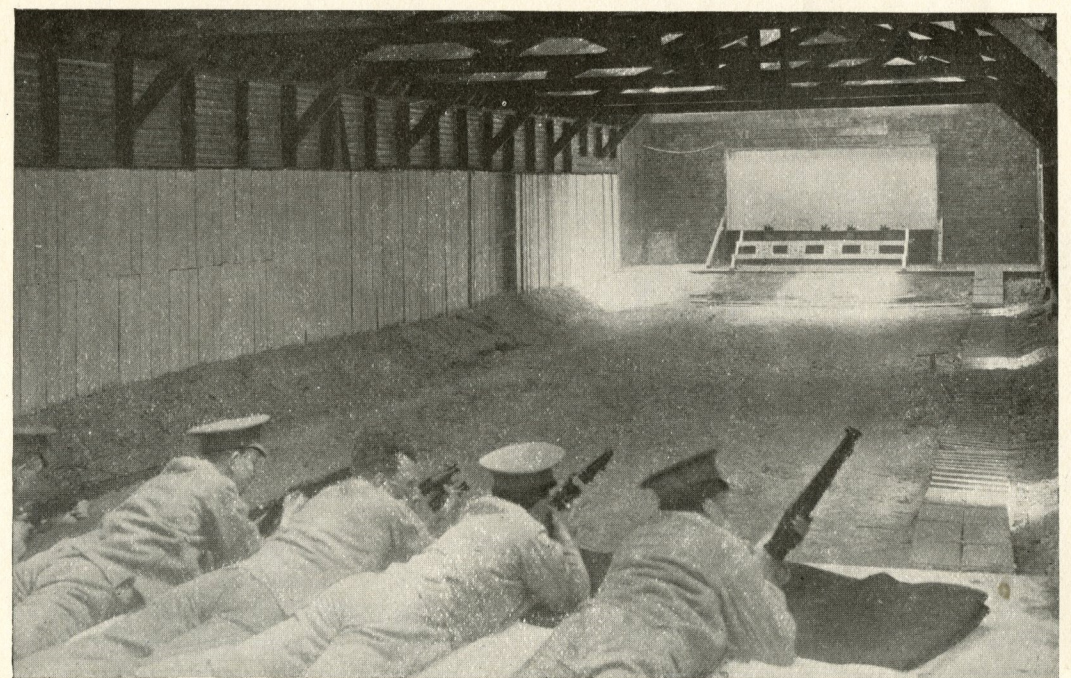


THE SKITTLE ALLEYS



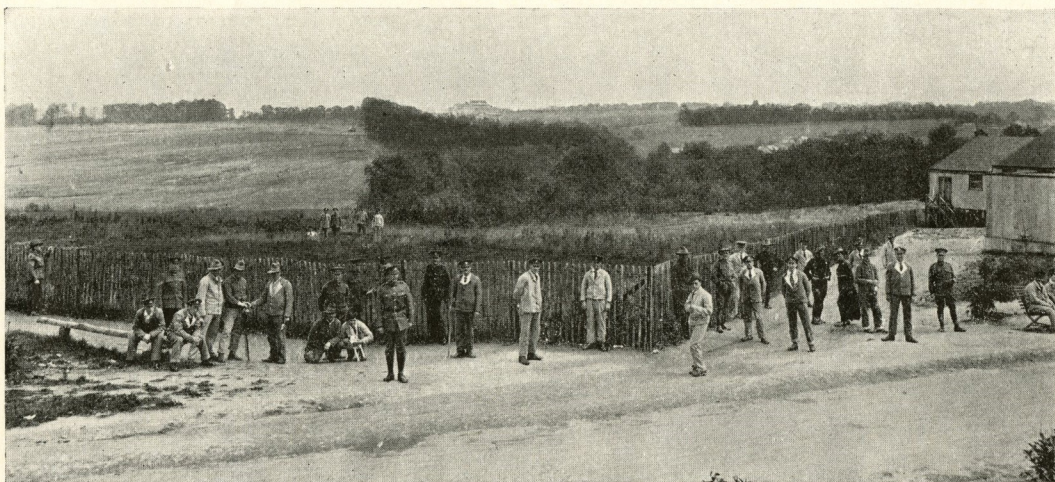
THE RECREATION HALL (INTERIOR)

Bassano



A RIFLE RANGE

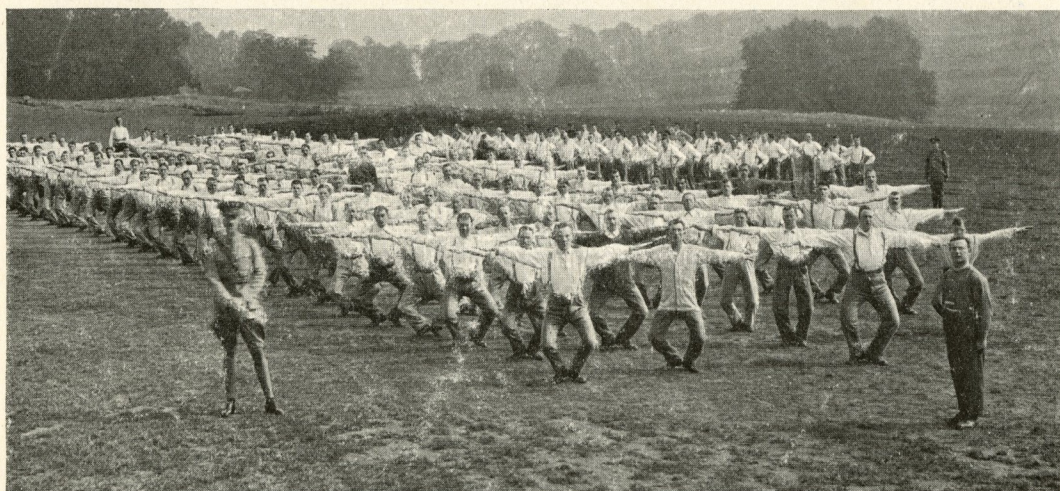
Bassano



VIEW FROM THE CAMP

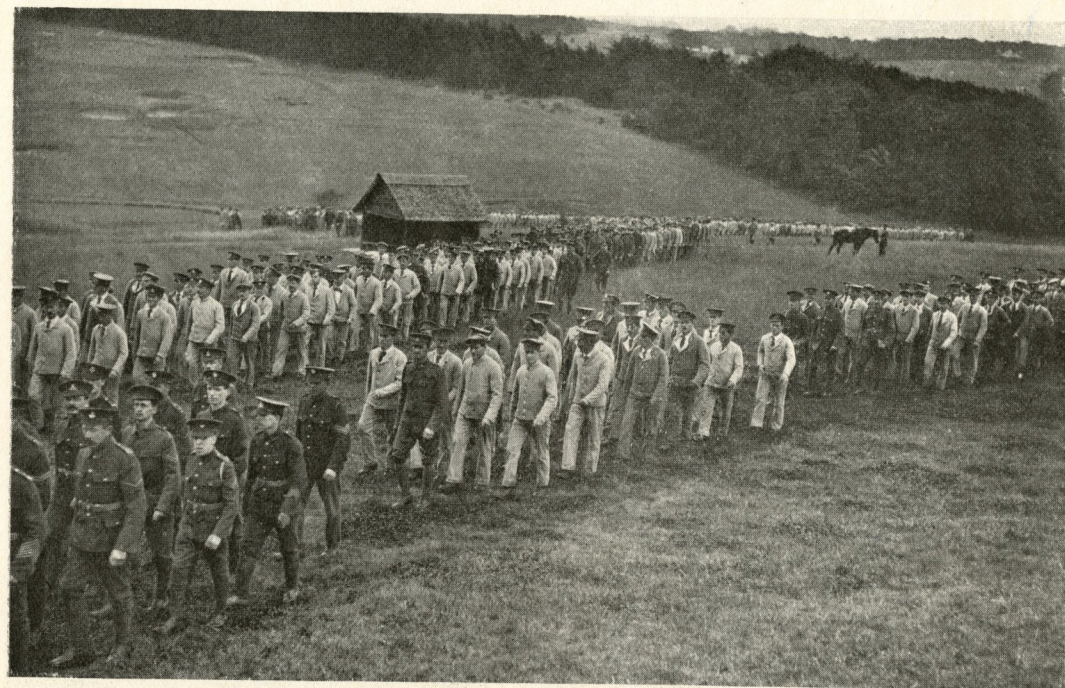


PHYSICAL DRILL OF CONVALESCENTS



PHYSICAL DRILL OF CONVALESCENTS

Bassano



COMING FROM PARADE

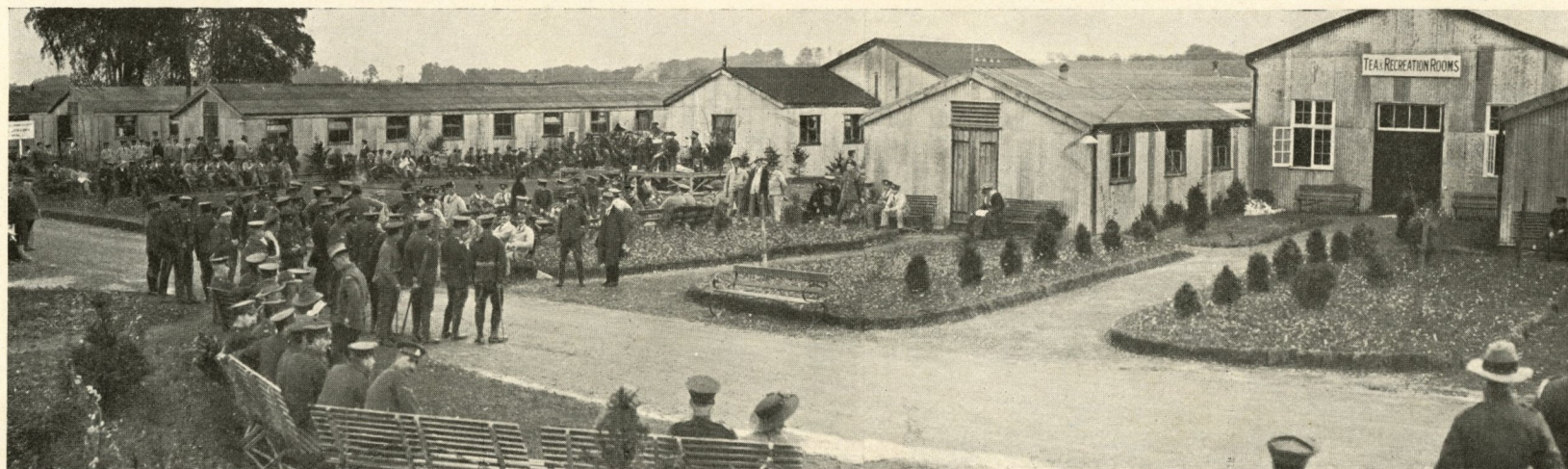


TEA AND RECREATION ROOMS (INTERIOR)

Bassano



A PARADE OF CONVALESCENTS AND STAFF IN WOODCOTE PARK



BAND PLAYING OUTSIDE THE RECREATION ROOMS

*Bassano*

PHOTOGRAPHS BY  
BASSANO . LTD.  
25 OLD BOND STREET