

**NOT TO BE PUBLISHED**

The information given in this document is not to be communicated, either directly or indirectly, to the Press or to any person not holding an official position in His Majesty's Service.

26/G.S. Publications/677

(W B GEORGE) CAPT  
RESIDENT STAFF OFFICER

# THE JAPANESE ARMY IN PICTURES

1942

D-538904

SGT. W.B. GEORGE - C.C.G.

NOTE

The purpose of this pamphlet is to give all ranks an idea of the appearance of the Japanese soldier and his armament.

*Prepared under the Direction of  
The Chief of the Imperial General Staff.*

*(Reprinted in Canada (May, 1942), by permission of the Controller, His Majesty's Stationery Office.)*

THE WAR OFFICE,  
23rd February, 1942

2500-5-42 (4621)

H.Q. 70-44-61

## TABLE OF CONTENTS

	PLATES
I. Uniforms ... ..	1, 2, and 3
II. Small arms, anti-tank and close support weapons	
(a) Rifles ... ..	4, 5, and 6
(b) Grenade thrower ... ..	7
(c) 6.5 mm. (.256-in.) L.M.Gs. ... ..	8 and 9
(d) 7.7 mm. (.303-in.) M.G. ... ..	10 and 11
(e) 81 mm. (3.19-in.) mortar ... ..	12 and 13
(f) 37 mm. (1.45-in.) anti-tank gun ... ..	14 and 15
(g) Close support gun ... ..	16, 17, and 18
(h) 75 mm. (2.95) mountain gun ... ..	19
III. Artillery—	
(a) 75 mm. (2.95-in.) field gun ... ..	20
(b) 10.5 cm. (4.14-in.) howitzers ... ..	21 and 22
(c) 15 cm. (5.91-in.) howitzer ... ..	23
(d) 15 cm. (5.91-in.) L.30 gun ... ..	24
(e) Medium artillery tractor ... ..	25
IV. Anti-aircraft artillery—	
(a) 7.7 mm. (.303-in.) A.A. machine gun ... ..	26 and 27
(b) 2 cm. (0.79-in.) A.A./A. Tk. gun ... ..	28
(c) 7.5 cm. (2.95-in.) A.A. gun ... ..	29
V. Armoured fighting vehicles—	
(a) Armoured cars ... ..	30 to 33
(b) Tanks ... ..	34 to 58
VI. Cavalry ... ..	59
VII. Military landing craft ... ..	60 to 74
VIII. Military landing craft carrier ... ..	75 to 80
IX. Bridging equipment ... ..	81 to 87
X. Wireless equipment ... ..	88
XI. Transport ... ..	89 and 90

## DISTRIBUTION

All arms ... ..	Scale A
Units for which special distribution is ordered (Armoured Corps and Recce Bns.) ... ..	Scale C



PLATE 1.—Senior Japanese Officers.



PLATE 2.—Typical Japanese soldier in active service uniform.

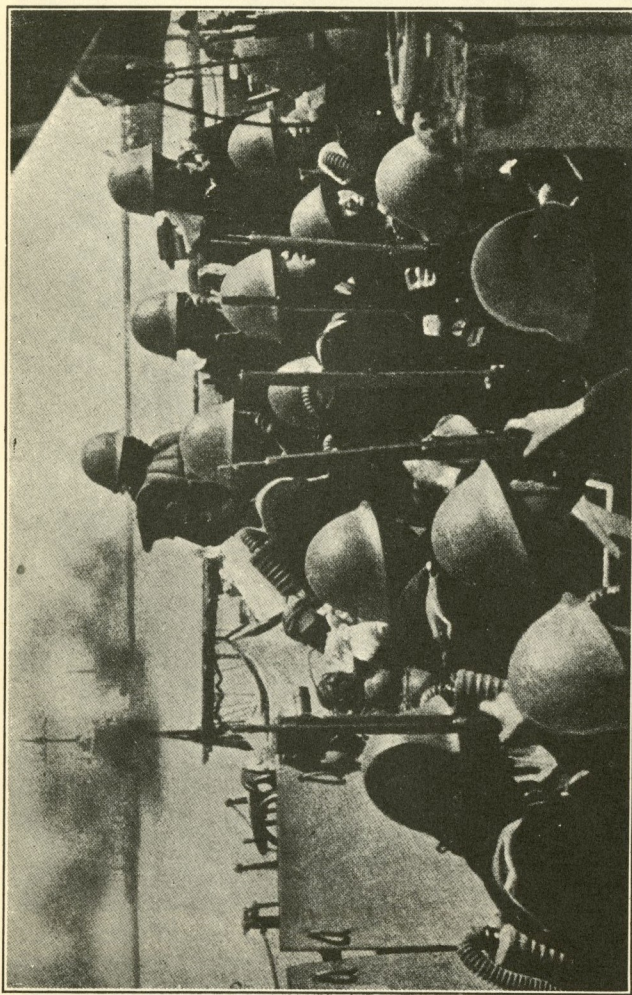


PLATE 3.—Naval Landing Party in Naval Dress.  
Naval landing party also use khaki uniform which differs from that worn by army only slightly, as collar and tie are often worn. This uniform is illustrated in Plate 88.

## JAPANESE RIFLES

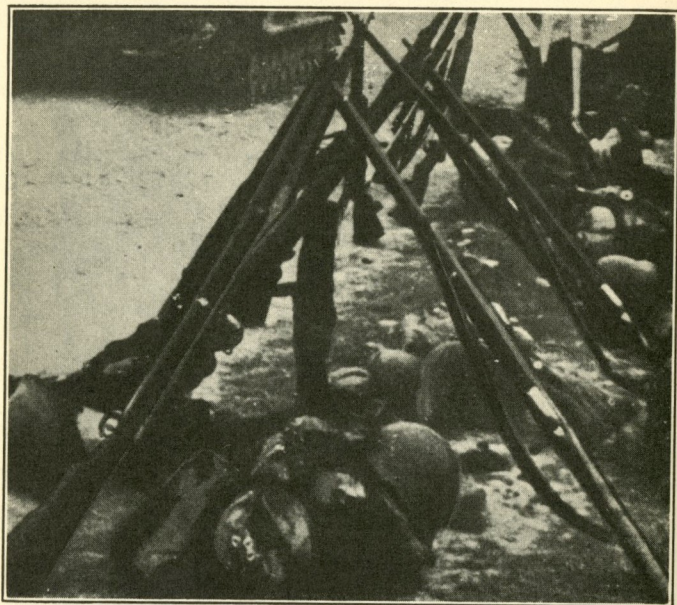


PLATE 4.—6.5 mm. (.256-in.) Rifle "38" (1905).  
 Weight (without Bayonet) ... .. 8 lb. 12 oz.  
 Length (without Bayonet) ... .. 4 ft. 4 in.  
 Sighted ... .. 400-2,400 m.  
 Magazine capacity ... .. 5 rounds  
 A telescopic sight can be fitted for use by snipers.  
 This rifle is essentially of Mauser type.

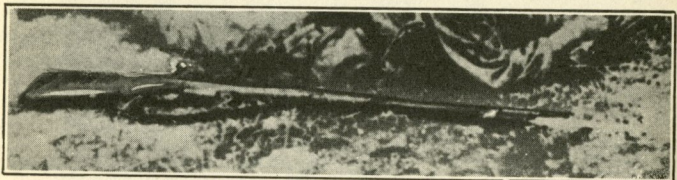


PLATE 5.—6.5 mm. (.256-in.) Rifle "38" (1905).

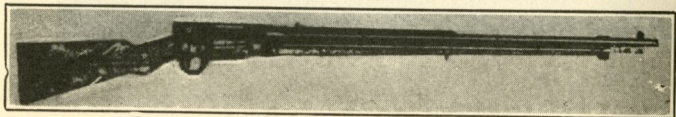


PLATE 6.—7.7 mm. (.303-in.) Rifle (1919).  
 It is reported that this rifle is to replace the 6.5 mm. rifle.

## JAPANESE GRENADE THROWER



PLATE 7.—50 mm. (1.97-in.) Grenade Thrower "89" (1929).

Range ("89" Grenade)	... ..	54-710 yds.
Range (time-fuze Grenade)	... ..	50-210 yds.
Weight in action	... ..	10½ lb.
Weight of "89" Grenade	... ..	23 oz.

This grenade thrower has a rifled barrel and the "89" Grenade is similar to a small shell.

## JAPANESE MACHINE GUNS

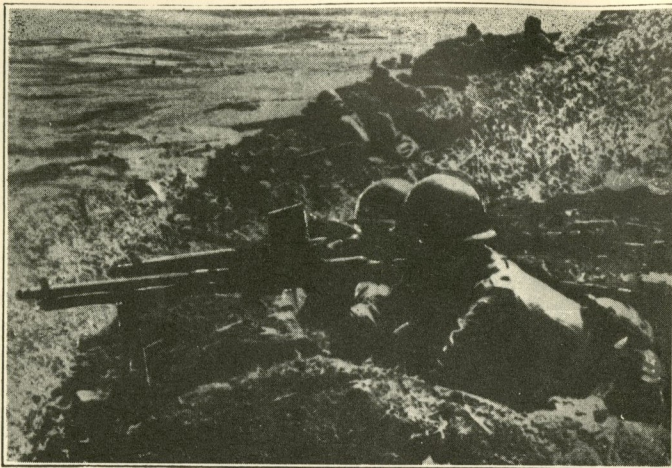


PLATE 8.—6.5 mm. (.256-in.) L.M.G. "96" (1936).

Weight	...	...	...	...	22 lb. (approx.)
Maximum rate of fire	...	...	...	...	550 r.p.m.
Feed	...	...	...	...	30-round box magazine

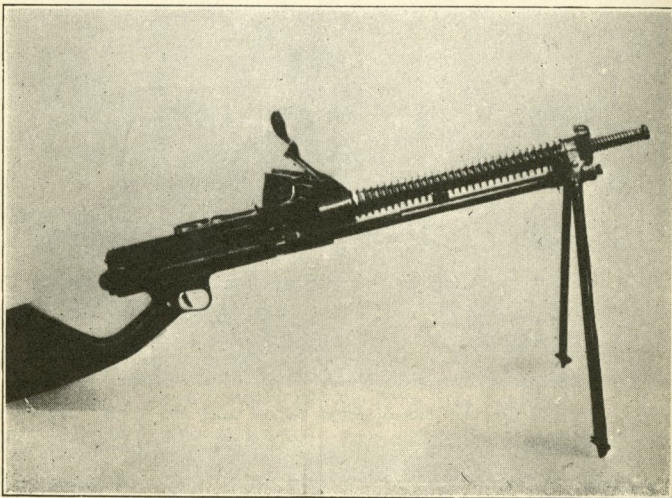


PLATE 9.—6.5 mm. (.256-in.) L.M.G. Nambu (1922).

Weight	...	...	...	...	23 lb. (approx.)
Maximum rate of fire	...	...	...	...	500 r.p.m.
Feed	...	Hopper holding 6 clips of 3 rounds each			

## JAPANESE MACHINE GUNS

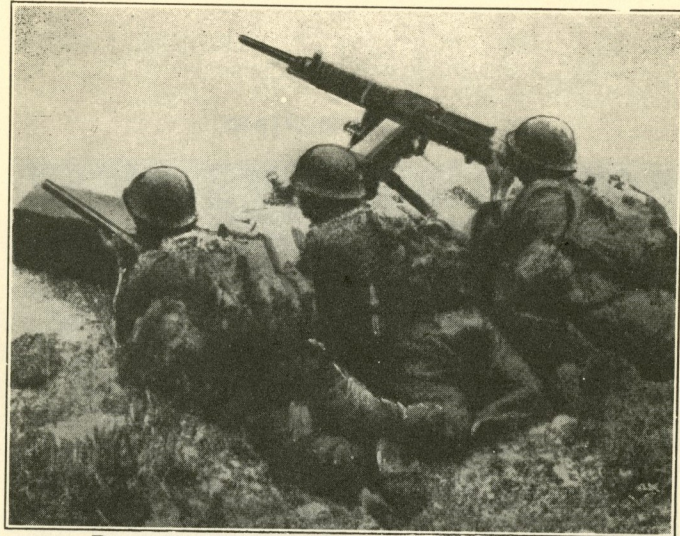


PLATE 10.—7.7 mm. (.303-in.) M.G. "92" (1932).

Weight (with tripod)	...	...	...	...	140 lb. (approx.)
Maximum rate of fire	...	...	...	...	500 r.p.m.
Feed	...	...	...	...	Strip holding 32 rds.

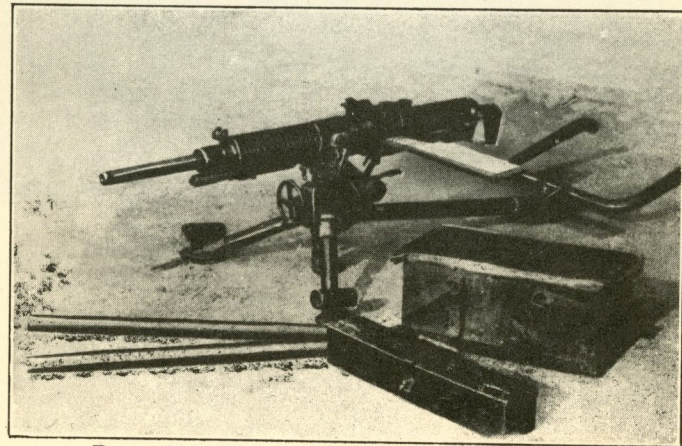


PLATE 11.—7.7 mm. (.303-in.) M.G. "92" (1932).

## JAPANESE MORTARS



PLATE 12.—81 mm. (3·19-in.) Mortar.

Weight with bipod and baseplate	...	129 lb.
Ranges: Light bomb (7-lb.)...	...	3,280 yds.
Heavy bomb (14-lb.)	...	1,310 yds.

## JAPANESE MORTARS



PLATE 13.—81 mm. (3·19-in.) Mortar.

## JAPANESE ANTI-TANK GUNS

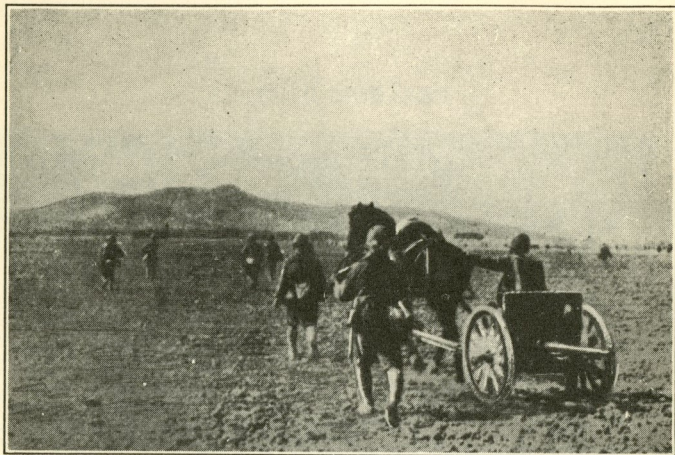


PLATE 14.—37 mm. (1.45-in.) Anti-Tank Gun " 94 "

M.V.	...	...	...	...	2,300 f/s.
Weight of shell	...	...	...	...	1.54 lb.
Best range	...	...	...	...	400 yds.

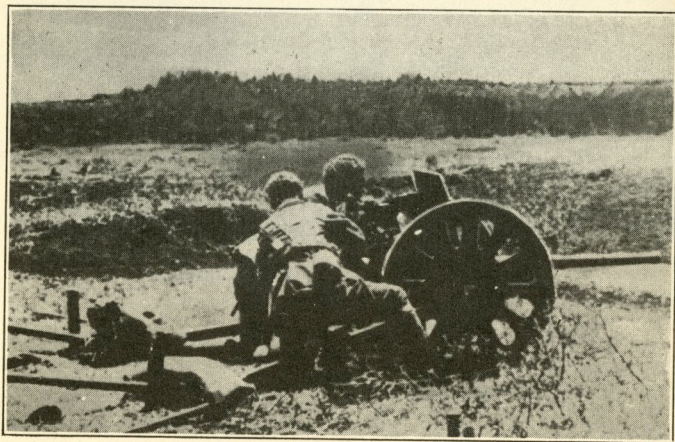


PLATE 15.—37 mm. (1.45-in.) Anti-Tank Gun " 94. "

Fires both H.E. and A.P.

Maximum range	...	...	...	...	5,450 yds.
---------------	-----	-----	-----	-----	------------

## JAPANESE CLOSE SUPPORT ARTILLERY

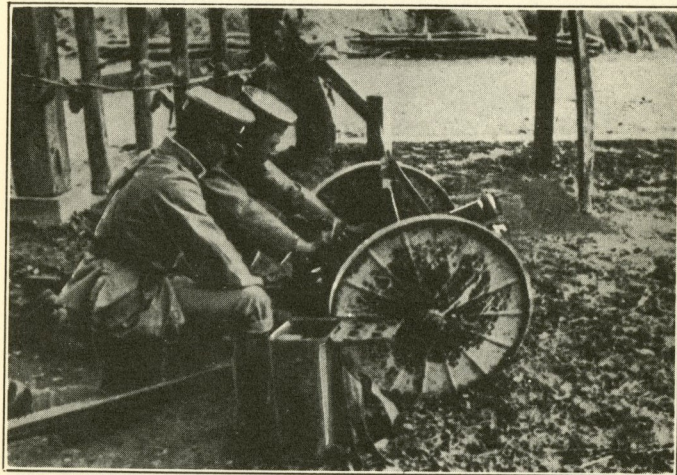


PLATE 16.—70 mm. (2.76-in.) " Battalion " Gun " 92. "

Maximum range	...	...	...	3,000 yds.
Weight of shell	...	...	...	8.36 lb.
Weight in action	...	...	...	180 lb.

## JAPANESE CLOSE SUPPORT ARTILLERY

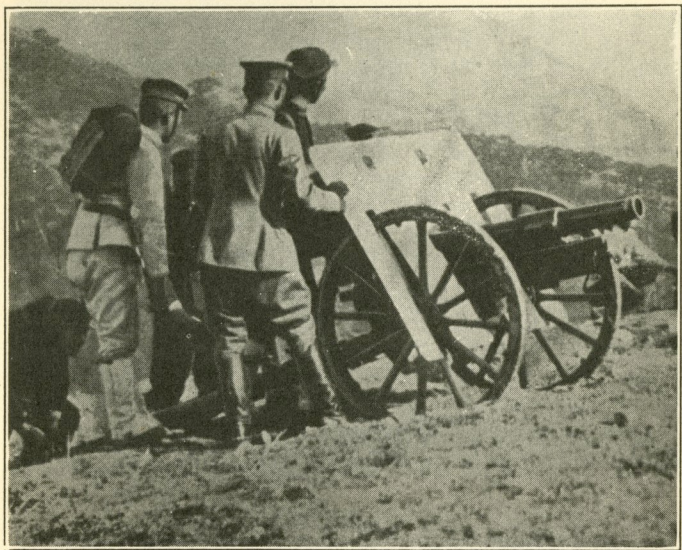


PLATE 17.—75 mm. (2.95-in.) Infantry Gun "41" (1908 model).

Maximum range	...	...	...	7,000 yds.
Effective range	...	...	...	2,200 yds.
Weight of shell	...	...	...	15 lb.

Used for close support of the Infantry. "The Regimental Gun."

## JAPANESE CLOSE SUPPORT ARTILLERY

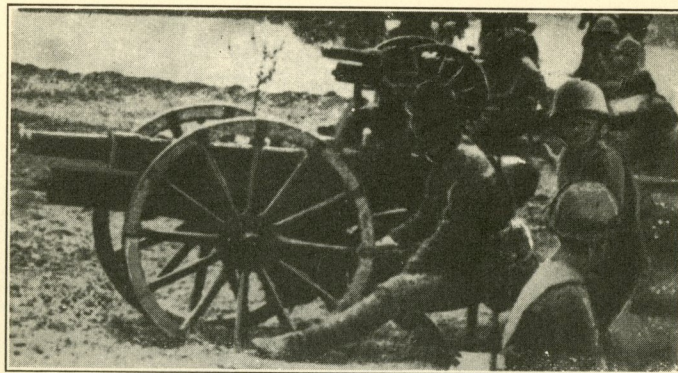


PLATE 18.—75 mm. (2.95-in.) Infantry Gun "41" (1908 model).

Maximum range	...	...	...	7,000 yds.
Effective range	...	...	...	2,200 yds.
Weight in action	...	...	...	1,500 lb.

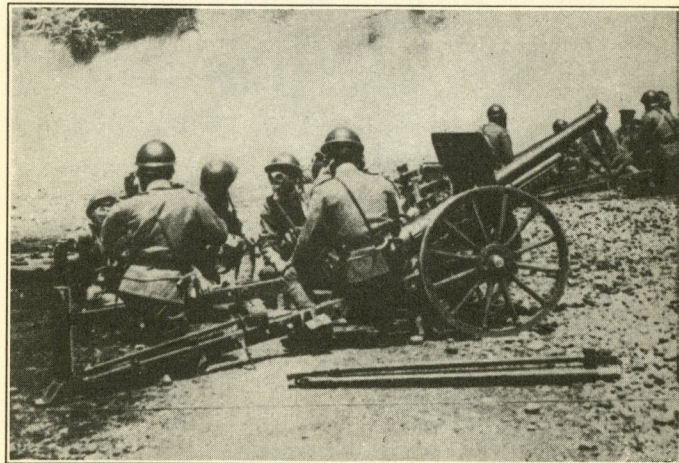


PLATE 19.—75 mm. (2.95-in.) Mountain Gun "94" (1934).

M.V.	...	...	...	1,670 f/s.
Maximum range	...	...	...	9,800 yds.
Weight in action	...	...	...	1,200 lb.



## JAPANESE FIELD ARTILLERY

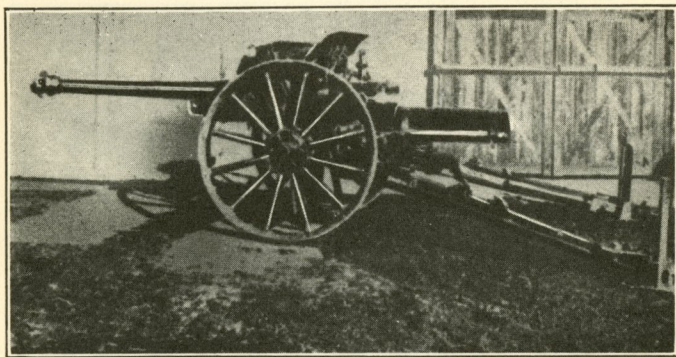


PLATE 20.—75 mm. (2.95-in.) Field Gun "90" (1930 Model).

M.V. ... ..	2,230 ft./sec.
Weight of shell ... ..	14 lb. (approx.)
Maximum range ... ..	15,000 yds.

Proportion of these guns are now mechanized and have pneumatic tyres, and are drawn by new type of tractor.

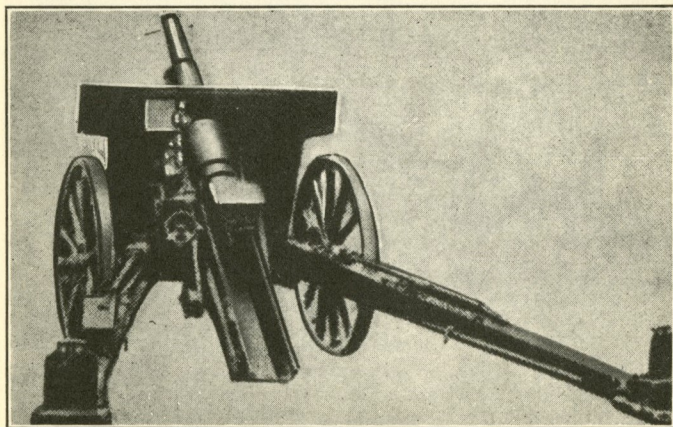


PLATE 21.—10.5 cm. (4.14-in.) Howitzer "91" (1931 Model).

M.V. ... ..	1,790 ft./sec.
Weight of shell ... ..	35 lb.
Maximum range ... ..	14,200 yds.

## JAPANESE FIELD ARTILLERY

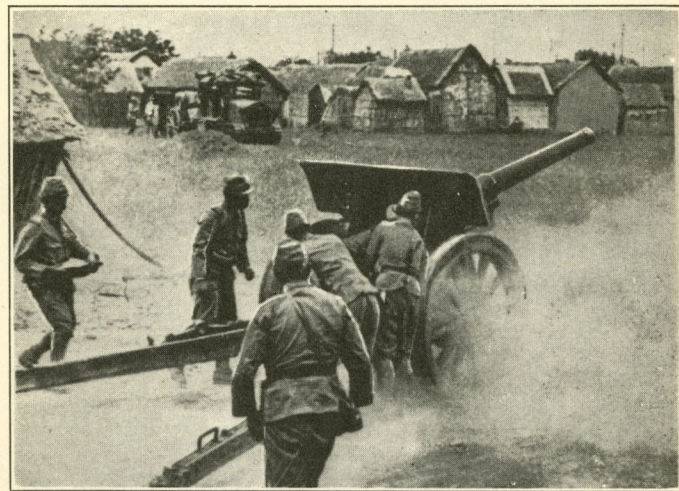


PLATE 22.—10.5 cm. (4.14-in.) Gun "92" (1932 Model).

Maximum range (with streamlined amn.) ...	20,000 yds.
Maximum range (with ordinary amn.) ...	14,200 yds.
Weight of shell ... ..	33 lb.

The normal Medium Artillery Gun.

## JAPANESE HEAVY ARTILLERY



PLATE 23.—15 cm. (5.91-ins.) Howitzer (1915 Model).  
 M.V. ... .. 1,130 ft./sec.  
 Maximum range ... .. 8,300 yds.  
 Weight of shell ... .. 79.2 lb.

## JAPANESE HEAVY ARTILLERY

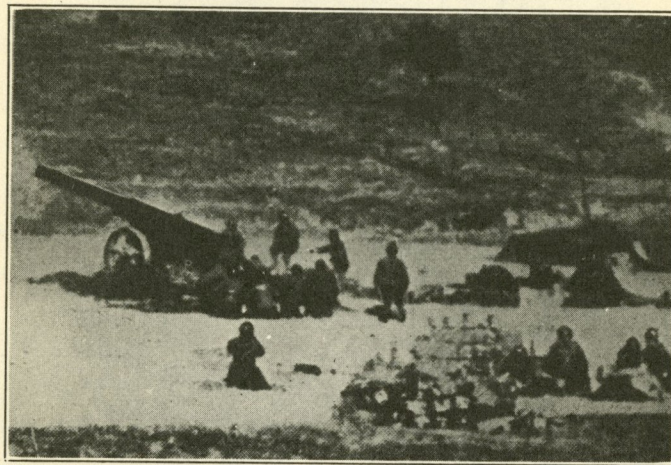


PLATE 24.—Gun 89 (1929) 150 mm.

Maximum range	...	...	...	19,800 yds.
Weight of shell	...	...	...	80 lb.
M.V.	...	...	...	2,260 ft./sec.

## JAPANESE ARTILLERY AND TRANSPORT



PLATE 25.—Medium Artillery Tractor.

## JAPANESE ANTI-AIRCRAFT ARTILLERY

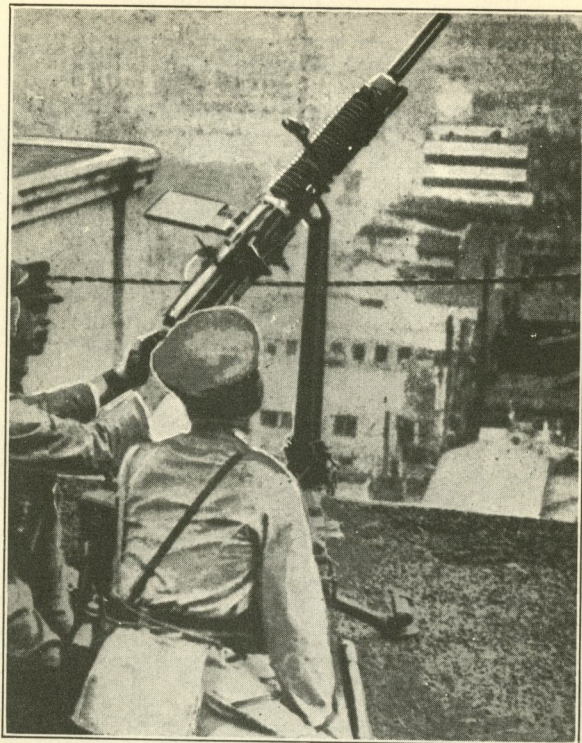


PLATE 26.—7.7 mm. (.303-in.) M.G. "92" 1932, on A.A. Mounting.

Weight (with tripod) ... ..	140 lb. (approx.)
Maximum rate of fire ... ..	500 r.p.m.
Feed: strip holding ... ..	32 rounds

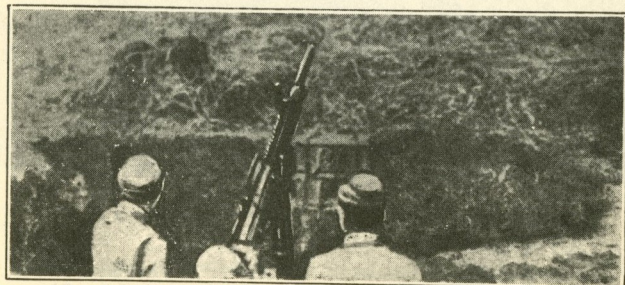


PLATE 27.—7.7 mm. (.303-in.) M.G. "92" 1932, on A.A. Mounting.

## JAPANESE ANTI-AIRCRAFT ARTILLERY



PLATE 28.—2 cm. (0.79-in.) A.A./A.Tk. Gun—Jlas (Oerlikon).

M.V.	...	...	...	...	2,720 ft./sec.
Maximum Horizontal range	...	...	...	...	5,450 yds.
Maximum vertical range	...	...	...	...	12,200 ft.
Practical rate of fire	...	...	...	...	120 r.p.m.

## JAPANESE ANTI-AIRCRAFT ARTILLERY

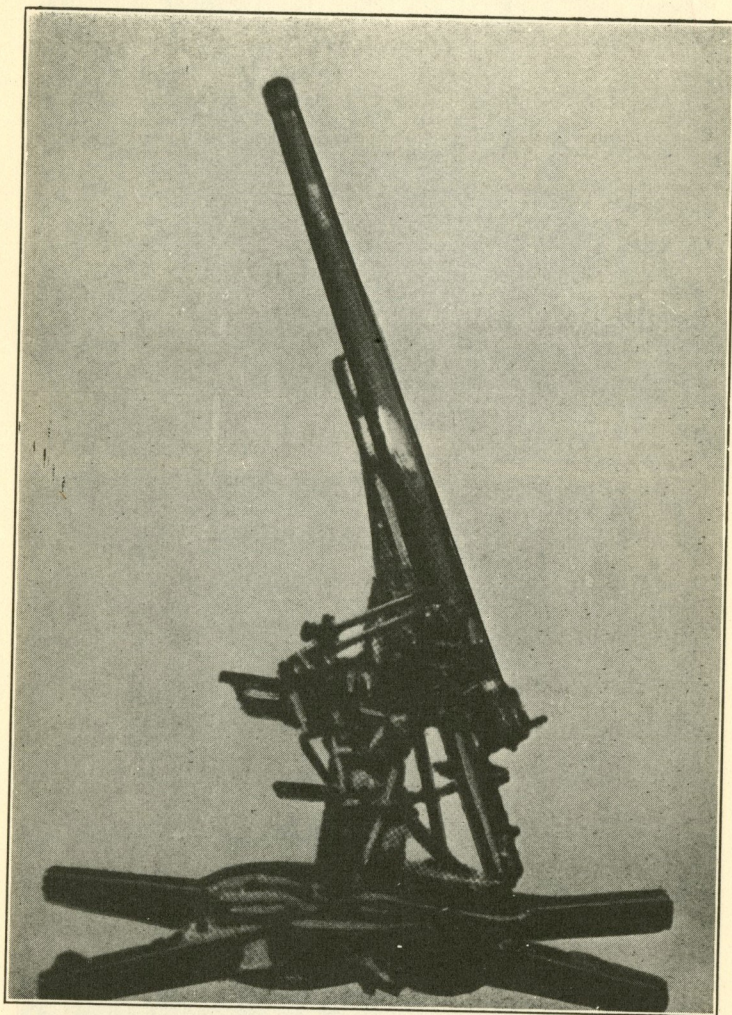


PLATE 29.—7.5 cm. (2.95-in.) A.A. Gun. M. 28.

M.V.	...	...	...	...	2,400 ft./sec.
Weight of projectile	...	...	...	...	14.3 lb.

## JAPANESE A.F.Vs. (Armoured Cars)

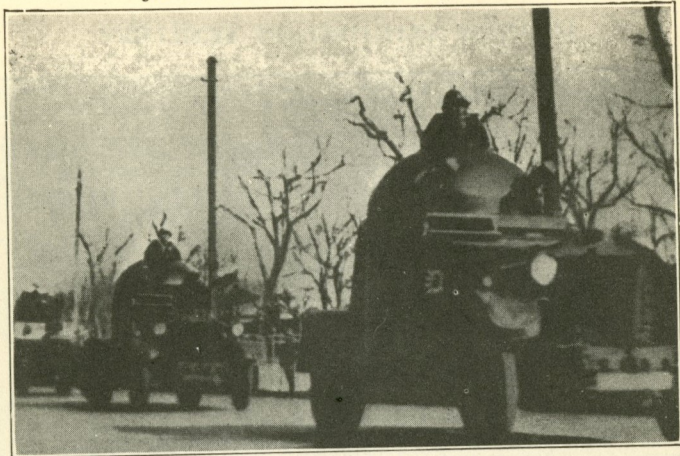


PLATE 30.—Osaka M. 2592 (1932).

Armament ... .. Two M.Gs.  
 Armour ... .. 8-11 mm. (.315-in.—.433-in.)

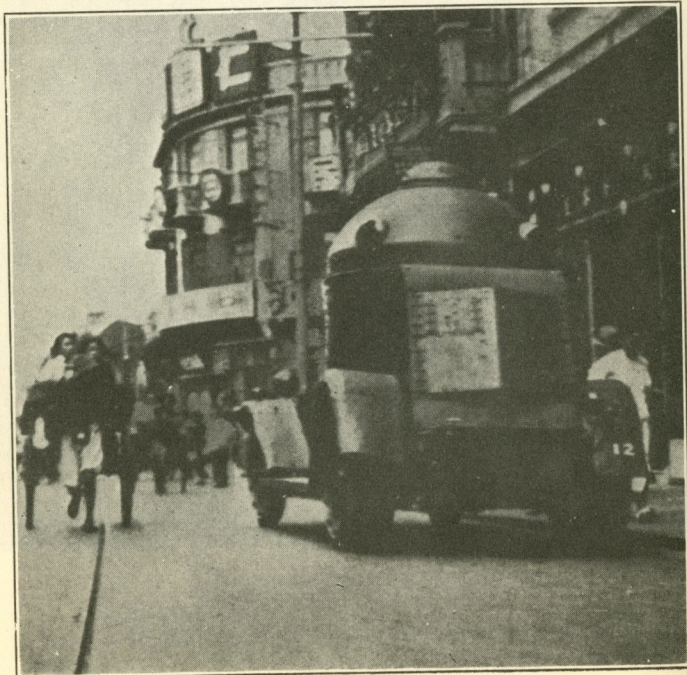


PLATE 31.—Osaka M. 2592 (1932).

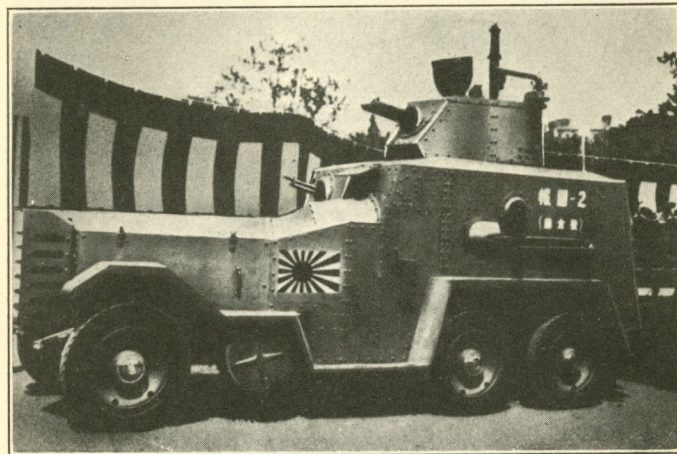
JAPANESE A.F.Vs.  
(Armoured Cars)

PLATE 32.—Naval 6-Wheel Landing Party Type.

Armament ... .. Five M.Gs. (including one A.A.)  
 Armour ... .. 8-11 mm. (.315-in.—.433-in.)

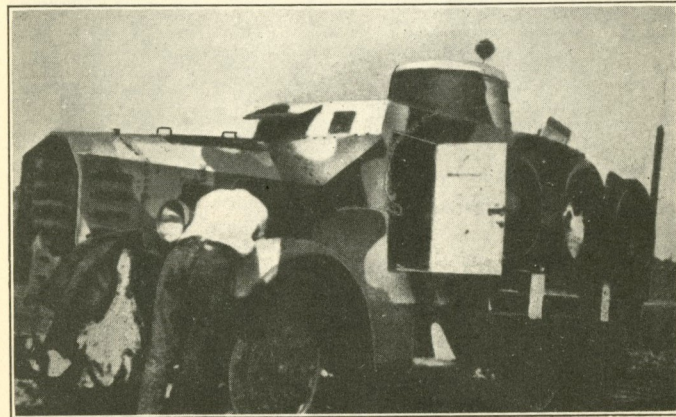


PLATE 33.—6-Wheel M. 2594 Sumida 1933.

Road and rail car.

Armament ... .. One M.G. and seven Rifle or M.G. slits.  
 Armour ... .. Up to 16 mm. (.630-in.).

## JAPANESE A.F.Vs.

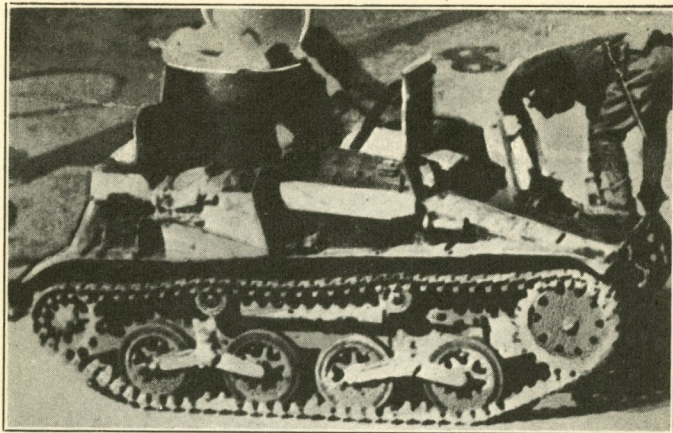


PLATE 34.—Ishikawajima Tankette M.2592 (1932).

Armament ... .. One M.G.

Armour ... .. 8-14 mm. (.315 in.—.551 in.).

This Tankette is included in the Divisional Tank Battalion.  
A modern type, similar to the 2592. The 2598 (1938) is now in use.

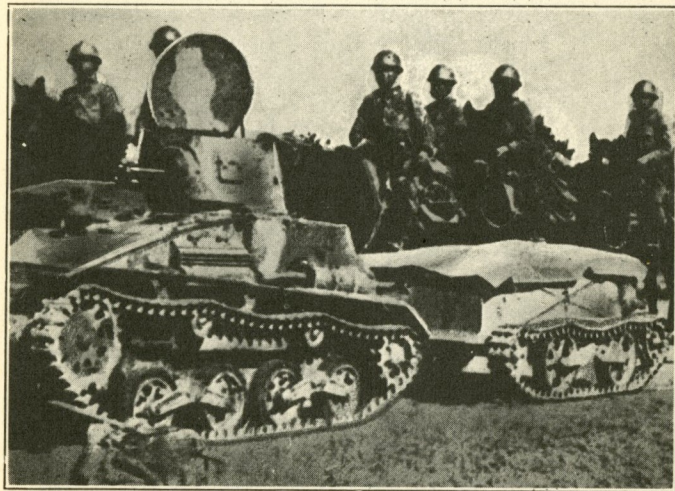


PLATE 35.—Ishikawajima Tankette M.2592 (1932).

Side view with trailer, which is used for carrying ammunition and stores.

## JAPANESE A.F.Vs.

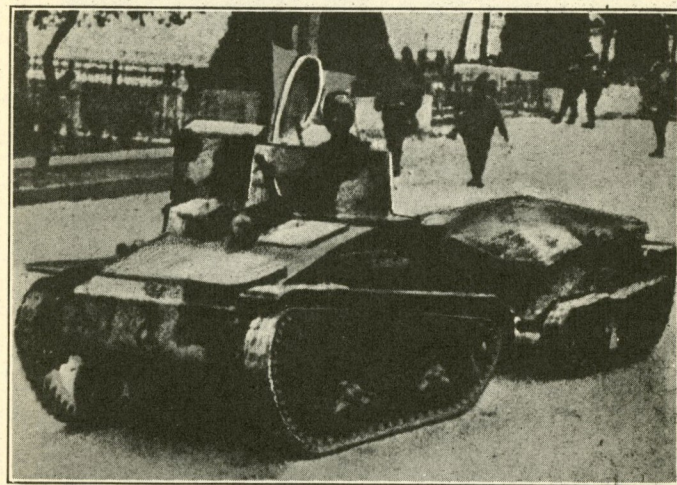


PLATE 36.—Ishikawajima Tankette M.2592 (1932).

Front view with trailer.

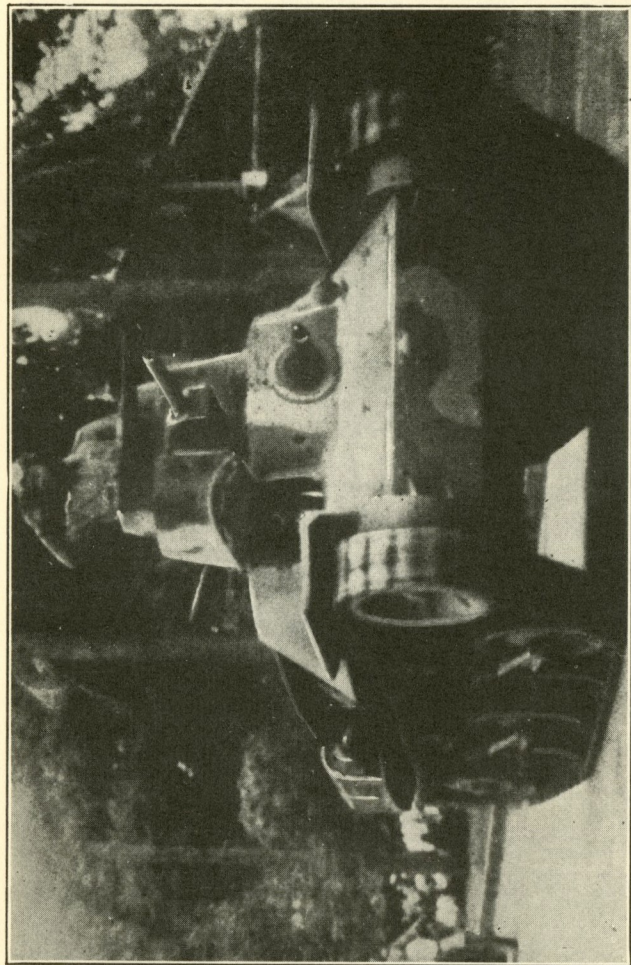


PLATE 37.—Light Tank M. 2595 (1935).  
 Armament—One 4.7 mm. Gun (1.85-in.) Two 7.7 mm. M.Gs. (.303-in.)  
 Part of the Divisional Tank Battalion and of the Tank Regiment.  
 Weight ... .. 7 tons.

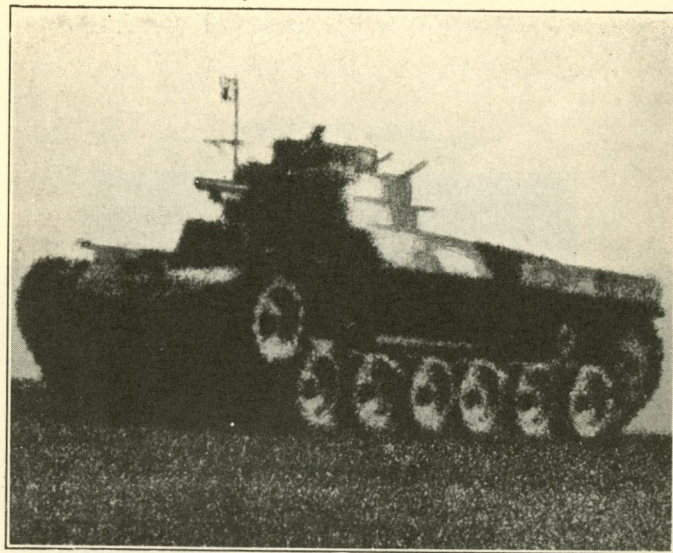


PLATE 38.—Medium Tank M. 2595 (1935).  
 Armament ... .. One 37 mm. Gun (1.457-in.)  
 Two 7.7 mm. M.Gs. (.303-in.)  
 Armour ... .. 11-17 mm. (.433-in.-.669-in.)  
 Weight ... .. 20 tons.



PLATE 39.—Medium Tank M. 2595 (1935).  
 Showing rear machine gun.

## JAPANESE A.F.Vs.

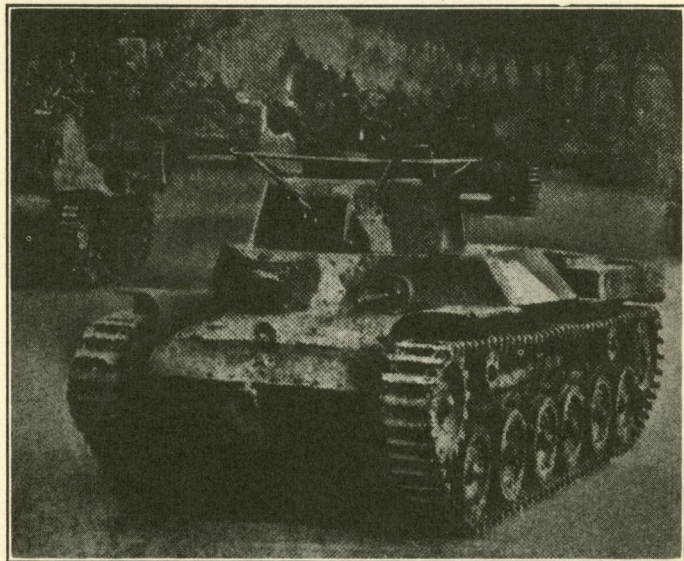


PLATE 40.—Medium Tank M.2595 (1935).  
Half front view.

## JAPANESE A.F.Vs.



PLATE 41.—Medium Tank M.2595 (1935).  
Rear view and rear side view.



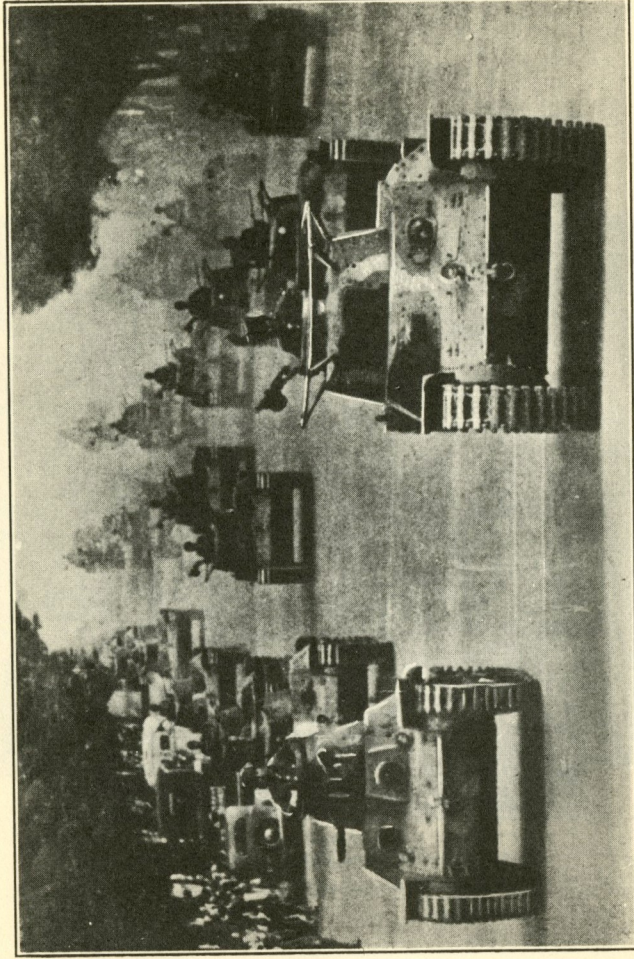
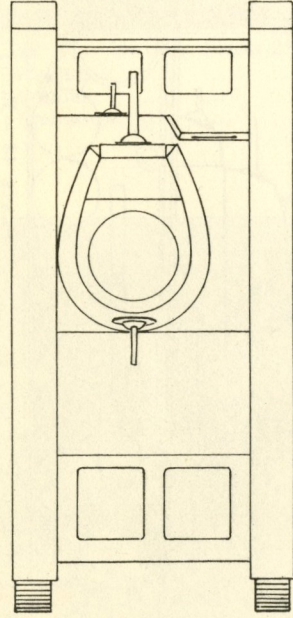


PLATE 42.—In left foreground—Modern Light Tank (2595 Model) (1935). In right foreground—Modern Medium Tank (2595 Model). Part of a Tank Regiment.



JAPANESE  
LIGHT TANK

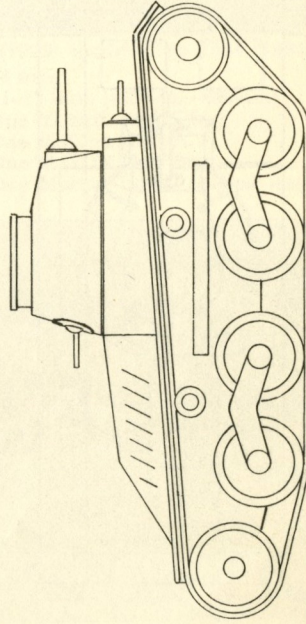
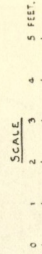


PLATE 43.—Model 2595 (1935).

JAPANESE  
CRUISER TANK

SCALE  
0 1 2 3 4 5 6 7 FEET.

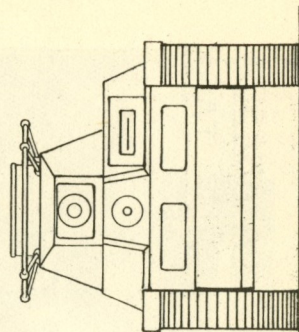
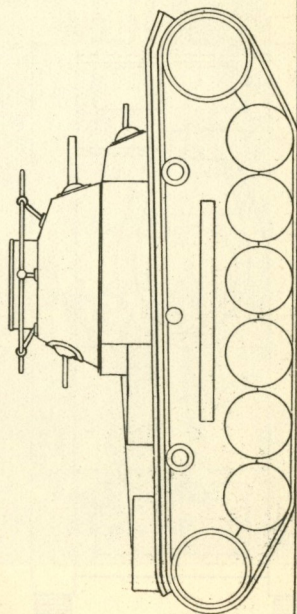
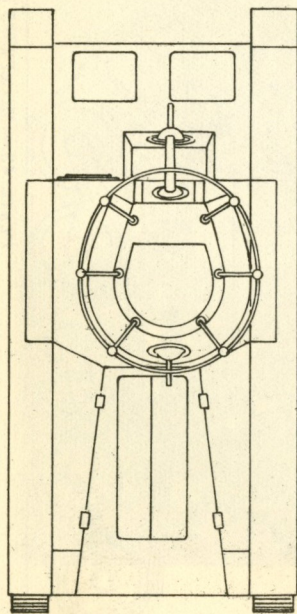


PLATE 44.—Model 2595 (1935).

JAPANESE A.F.Vs.  
Old Types.

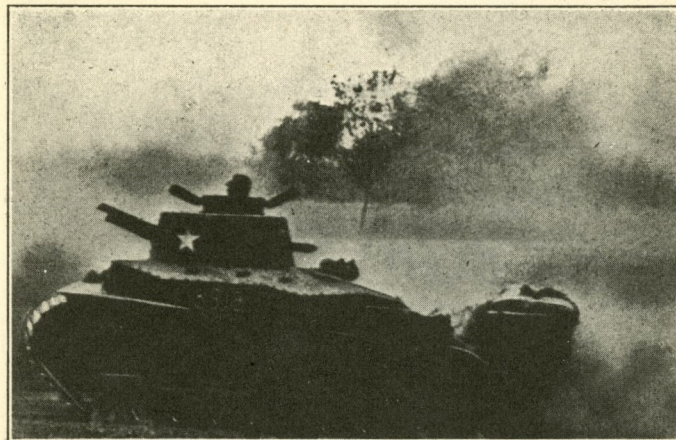


PLATE 45.—Medium Tanks 2589 (1929) modified to 2594 (1934).

Weight	...	...	14 tons
Armour	...	...	11-17 mm. (.433-in.-.669-in.)
Armament	...	...	One 37 mm. (1.457-in.).
			One M.G. in Turret.
			One M.G. in Hull fore.
			One Mortar Bomb carried inside.

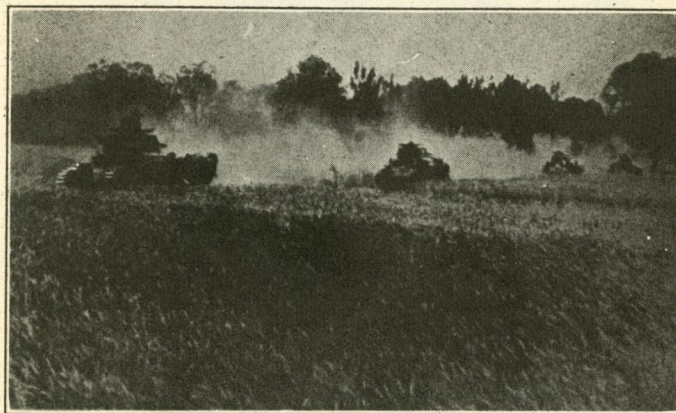


PLATE 46.—Medium Tanks 2589 (1929) modified to 2594 (1934).  
Half front view.

JAPANESE A.F.Vs.  
Old Types.

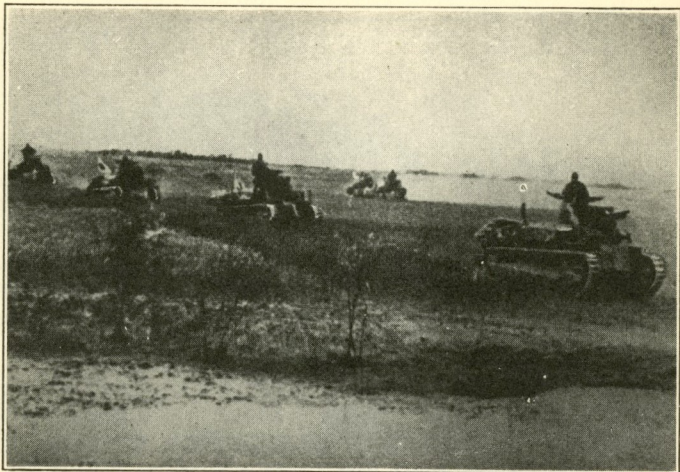


PLATE 47.—Medium Tanks 2589 (1929) modified to 2594 (1934).  
Half front view.

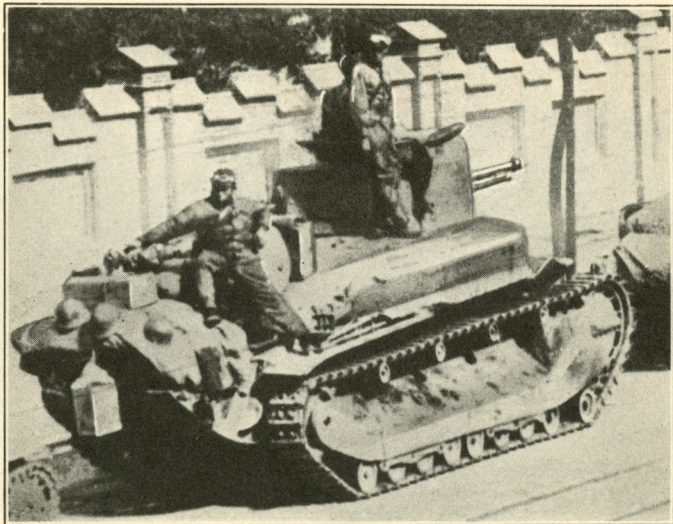


PLATE 48.—Medium Tanks 2589 (1929) modified to 2594 (1934).  
Side view.

JAPANESE A.F.Vs.  
Old Types.

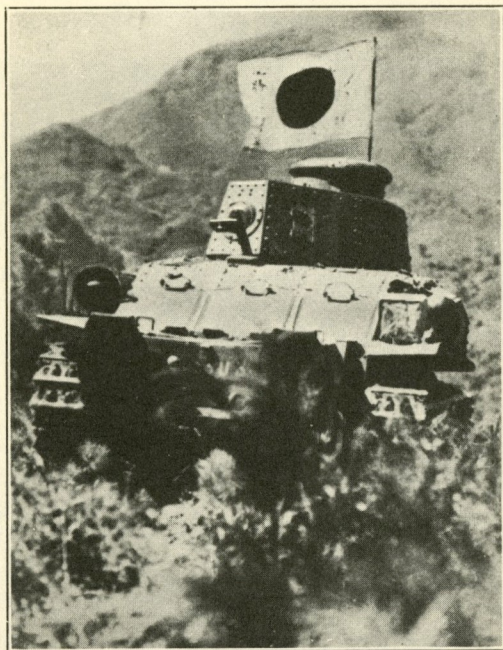


PLATE 49.—Medium Tanks 2589 (1929) modified  
to 2594 (1934). Rear view.

JAPANESE A.F.Vs.  
Old Types.

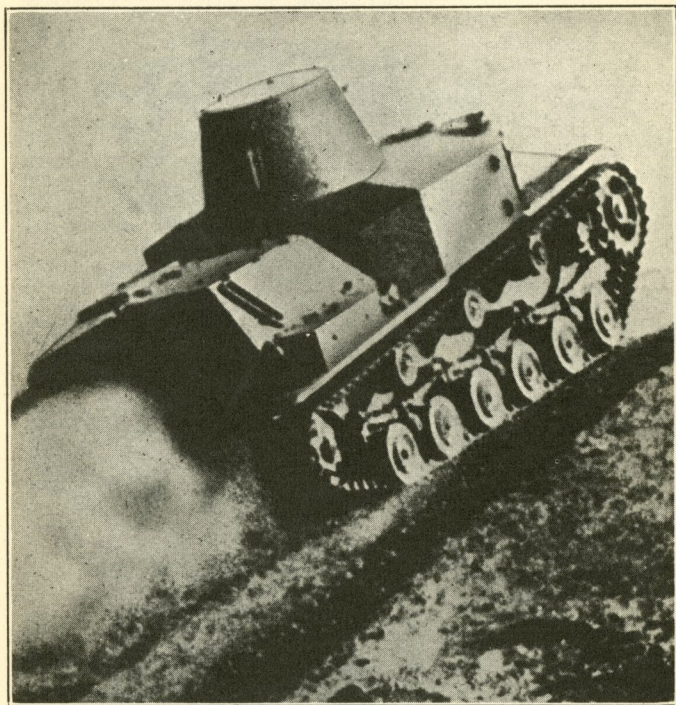


PLATE 50.—Light Tank 2592 (Rear view) (1932).

Weight	...	...	...	5 tons.
Armour	...	...	...	8-11 mm. (.315-in.—.433-in.).
Armament	...	...	...	One 13 mm. M.G. (.512-in.).

JAPANESE A.F.Vs.  
Old Types.

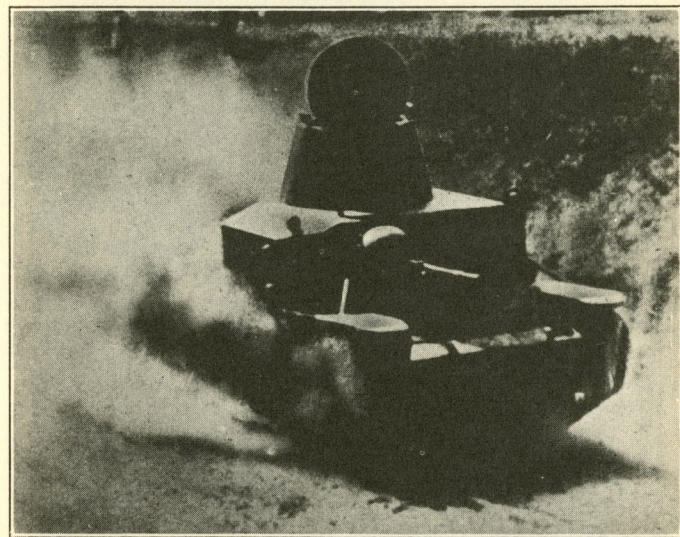


PLATE 51.—Light Tank 2592 (Front View).

JAPANESE A.F.Vs.  
Old Types.

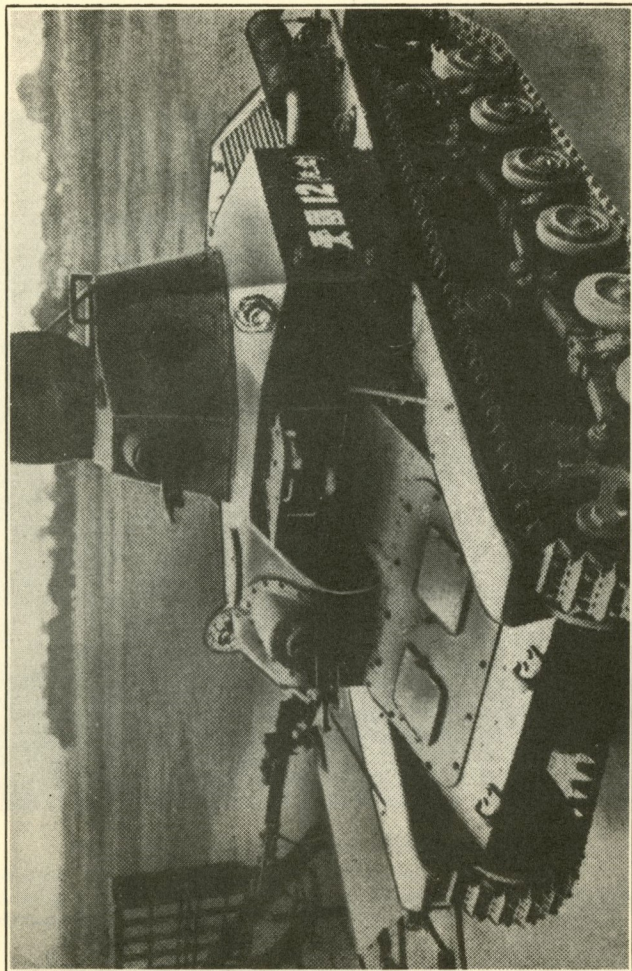


PLATE 52.—Light Tank (M. 2593) (1933).

Weight—7 tons. Armament—Two M.Gs. Armour—22 mm. (.866-in.)

JAPANESE A.F.Vs.  
(Tanks)  
New Types (Unconfirmed).

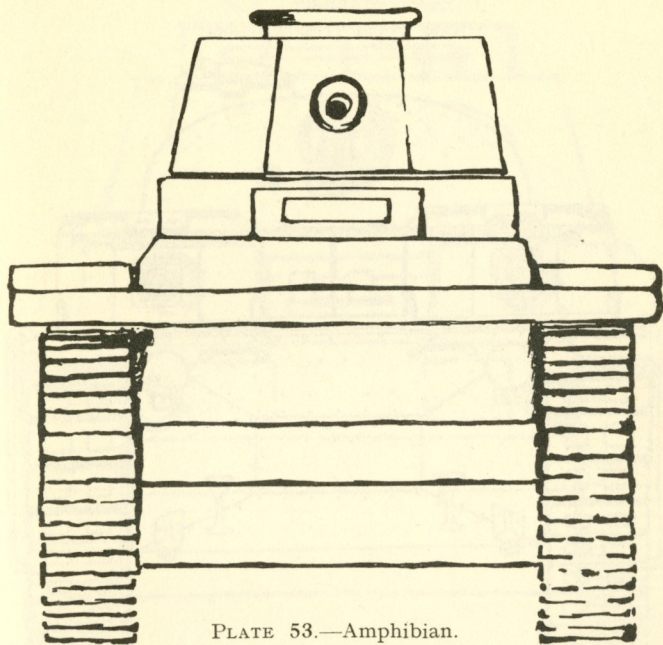


PLATE 53.—Amphibian.

New types reported but about which no confirmation has been received.

Armament ...	...	One M.G. turret.
Armour ...	...	One 37 mm. (1.45-in.) gun Hull fore.
Weight ...	...	15-20 mm. (.59-in.-.78-in.).
	...	4 tons.

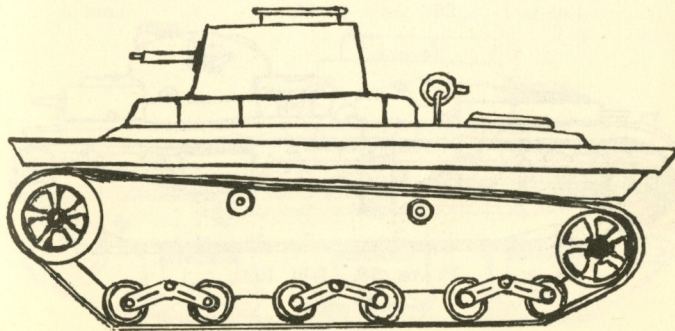


PLATE 54.—Amphibian. Side view.

JAPANESE A.F.Vs.  
(Tanks)  
New Types (Unconfirmed)

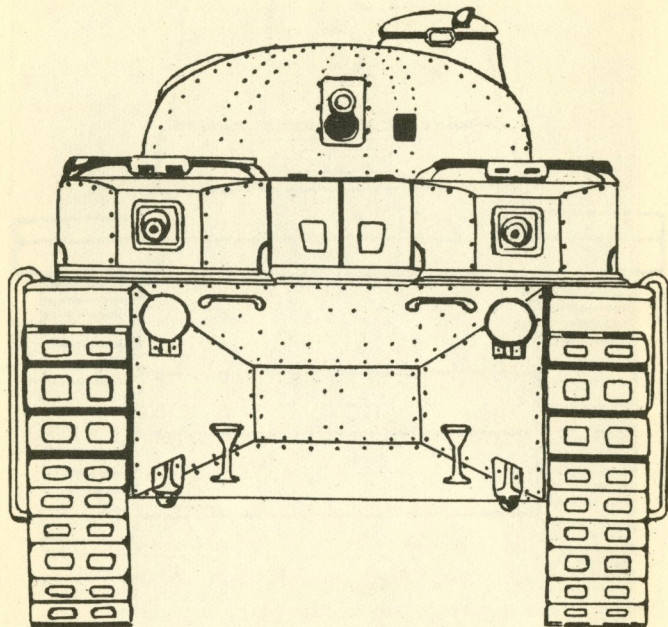


PLATE 55.—Ishi 108.

Armament ... Two 37 mm. (1.45-in.) guns in turret.  
Three M.Gs. and Flame Thrower in Hull fore.  
Weight ... 38 tons.

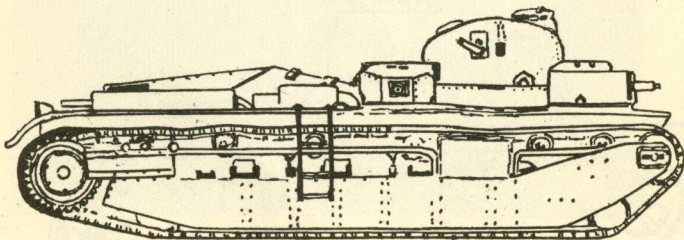


PLATE 56. Ishi 108.  
Side view.

JAPANESE A.F.Vs.  
(Tanks)  
New Types (Unconfirmed)

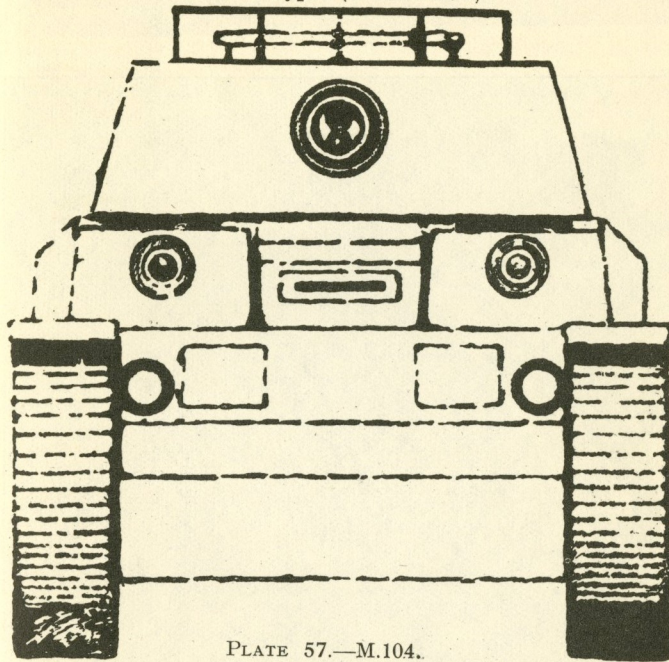


PLATE 57.—M.104.

Weight ... 29 tons.  
Armament ... In Turret one 37 mm. (1.45-in.).  
... one 75 mm. (2.95-in.).  
... In Hull fore one 37 mm. (1.45-in.)  
... one M.G.  
Armour ... 25-30 mm. (.98-in.-1.18-in.).

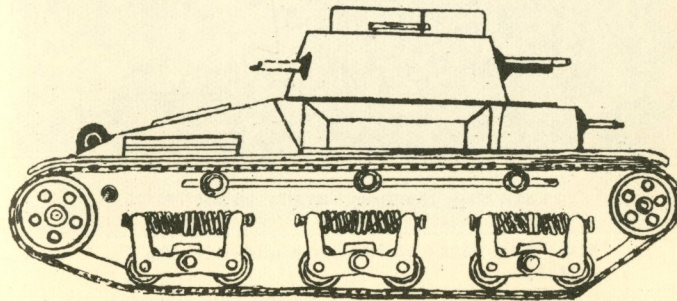


PLATE 58.—M.104.—Side view.

## JAPANESE CAVALRY



PLATE 59.—Japanese Cavalry on the march

## JAPANESE MILITARY LANDING CRAFT

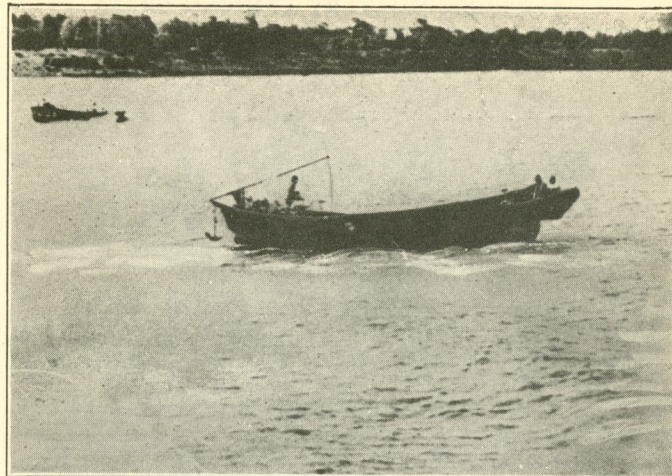


PLATE 60.—Military Landing Craft, "B" Class

Length	...	...	...	...	40-45 ft.
Draught fully loaded	...	...	...	...	36 in.
Capacity	...	...	...	...	70 men.
Armoured. Bow to Stern	...	...	...	...	25 mm.

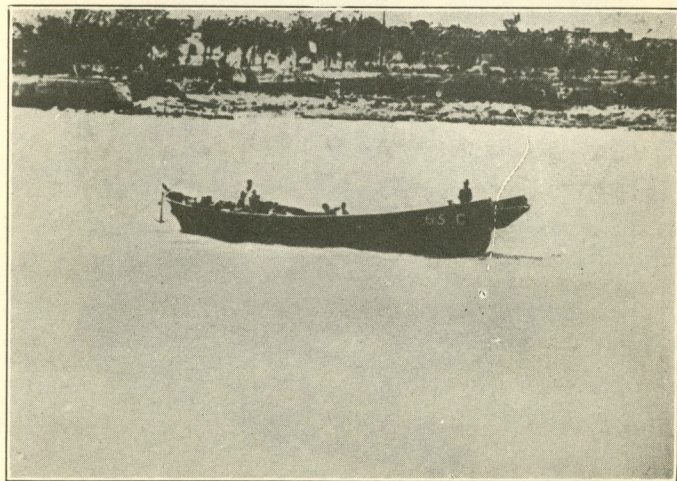


PLATE 61.—Military Landing Craft, "C" Class

Length	...	...	...	...	45-50 ft.
Draught fully loaded	...	...	...	...	36 in.
Capacity	...	...	...	...	80 men.
No armour.					

## JAPANESE MILITARY LANDING CRAFT

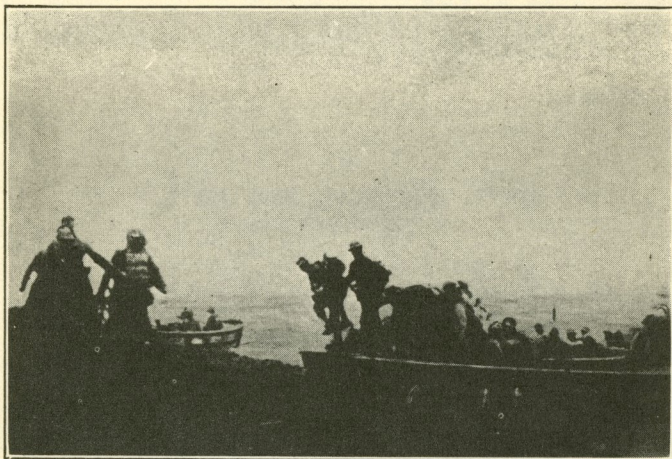


PLATE 62.—Military Landing Craft.

Troops landing from "C" Class, small type landing craft for attack on Anking, Yangtze River. Destroyer in background carried out bombardment of the shore before landing operations commenced. No opposition given to landing.

Length	...	...	...	30-40 ft.
Draught fully loaded	...	...	...	36 in.
Capacity	...	...	...	50-60 men.

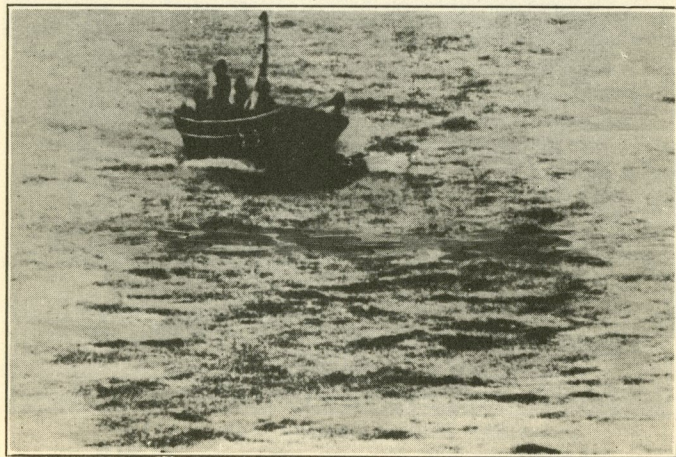


PLATE 63.—Military Landing Craft.  
Bow view, "C" Class, small type.

## JAPANESE MILITARY LANDING CRAFT

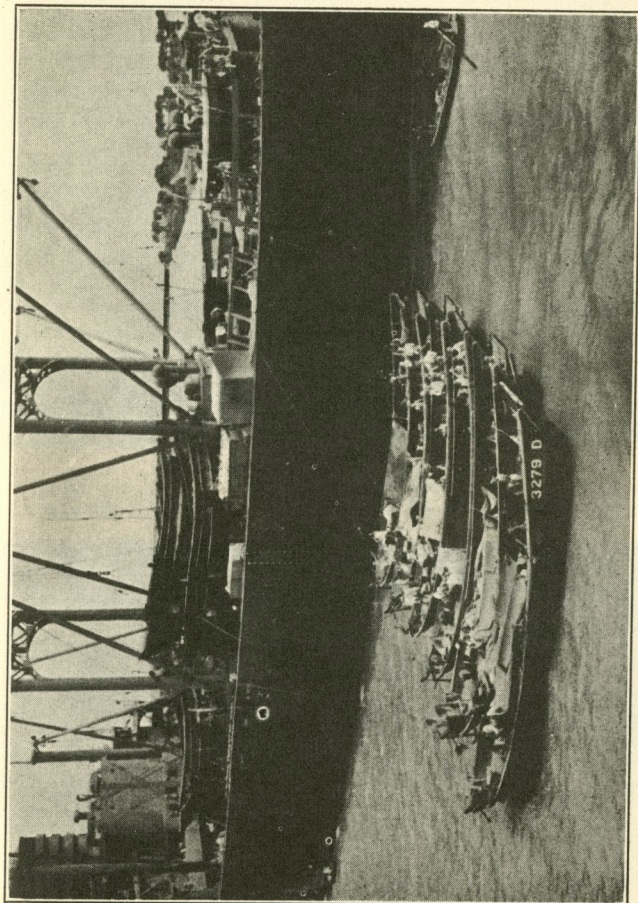


PLATE 64.—Military Landing Craft.

Length	...	50-55 ft.
Draught	...	30 in.
Carrying capacity	...	100 men.



## JAPANESE MILITARY LANDING CRAFT

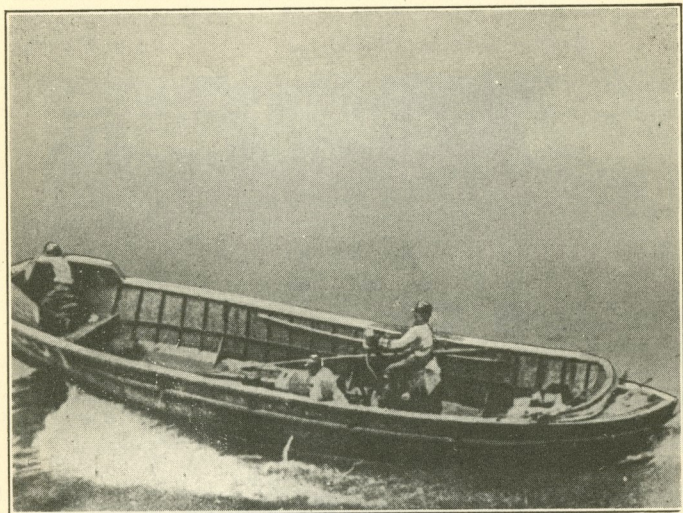


PLATE 65.—Military Landing Craft.

Length ... .. 30-40 ft. Draught ... .. 36 in.  
 Carrying capacity, 50-60 men. Fitted to carry M.G. forward.

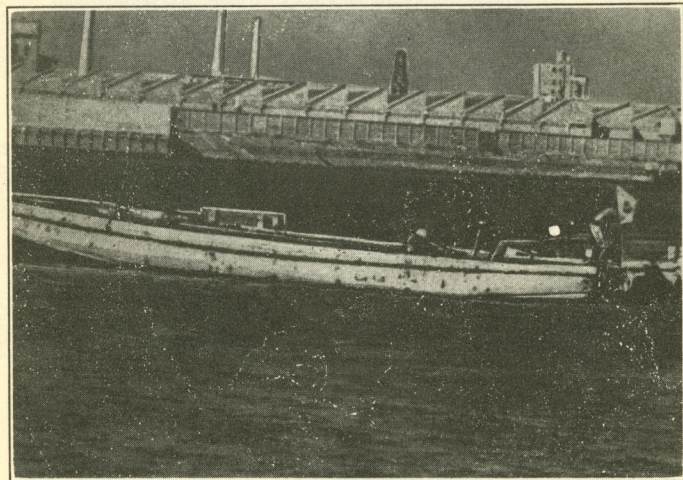
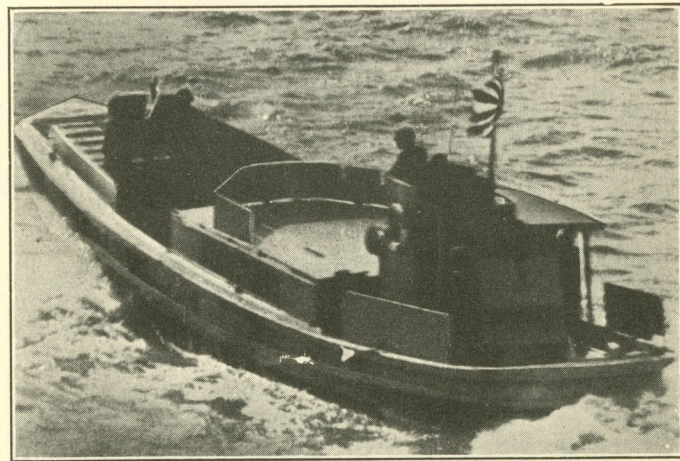


PLATE 66.—Military Landing Craft.

Large Sampan Type. Power driven. Many are not fitted with engines.

## JAPANESE MILITARY LANDING CRAFT

PLATE 67.—Military Landing Craft.  
Small Type.PLATE 68.—Military Landing Craft. Large Sampan Class.  
Armoured.

## JAPANESE MILITARY LANDING CRAFT

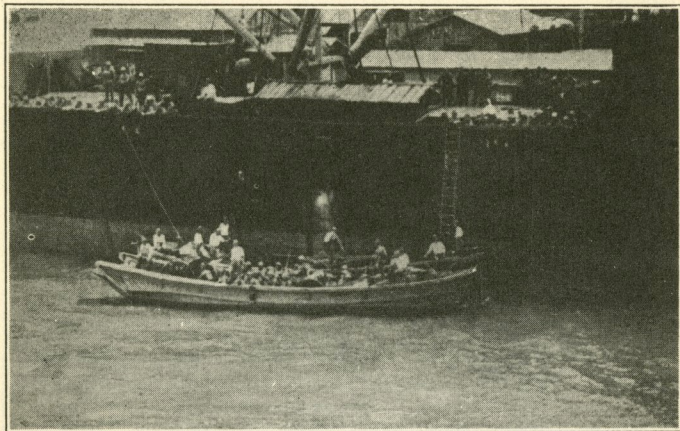


PLATE 69.—Military Landing Craft.  
 "C" Class, Large Type (with Field Piece).  
 Length ... 45-50 ft. Capacity ... 80 men. Draught ... 36 in.

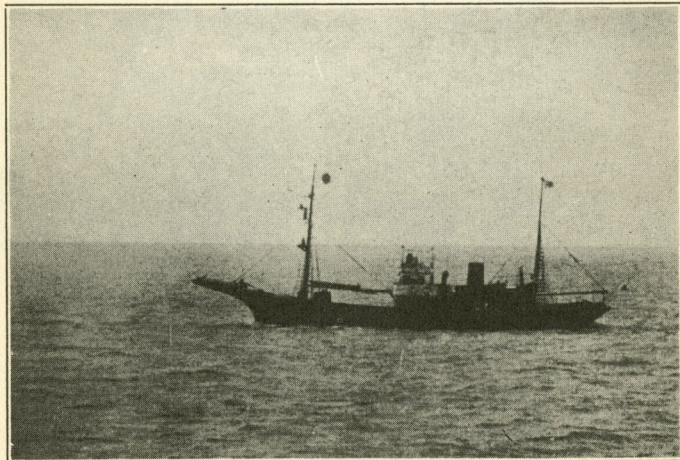


PLATE 70.—Military Landing Craft.  
 Flagship of Fishing Vessel Type.

## JAPANESE MILITARY LANDING CRAFT

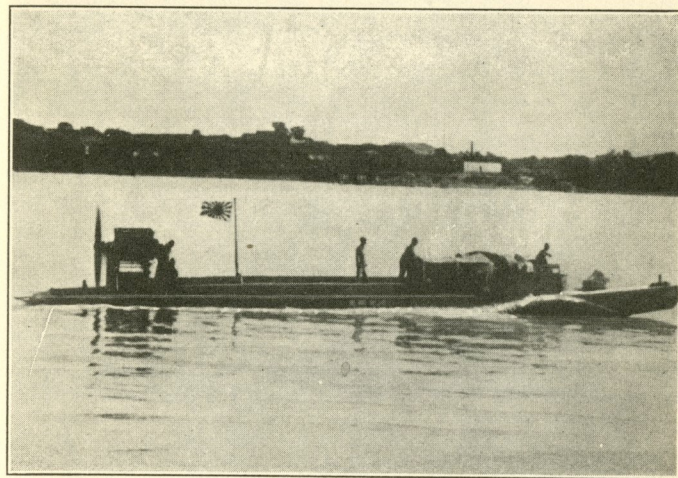


PLATE 71.—Military Landing Craft.  
 Hydroplane type (for lakes and creeks).

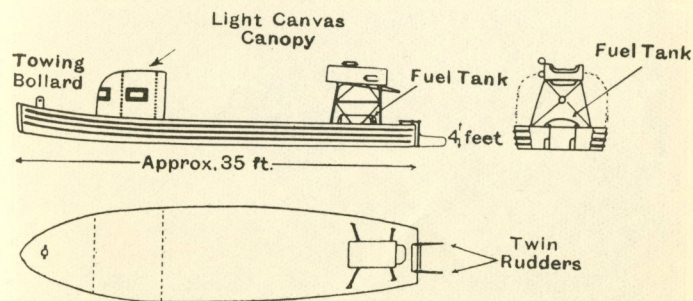


PLATE 72.—Military Landing Craft.  
 Plan of Hydroplane type.

## JAPANESE MILITARY LANDING CRAFT



PLATE 73.—Military Landing Craft.  
Picket Boats.

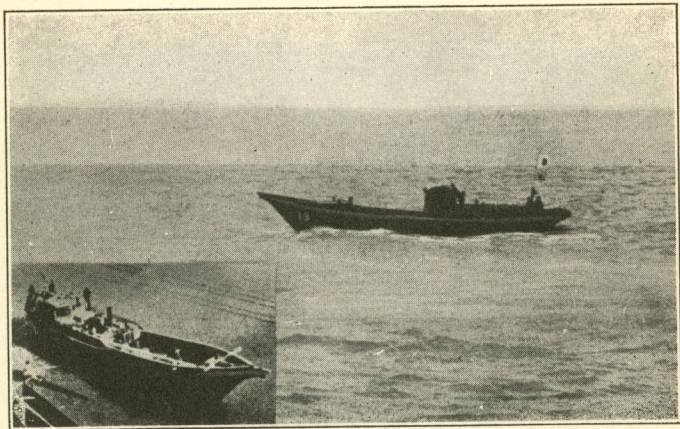


PLATE 74.—Military Landing Craft.  
Medium-size converted Fishing Fleet Type Landing Craft.

## JAPANESE MILITARY LANDING CRAFT CARRIER

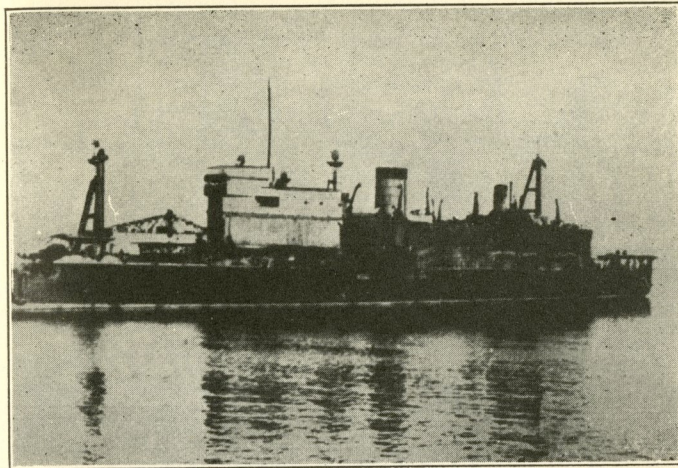


PLATE 75.—Special Military Landing Craft Carrier.

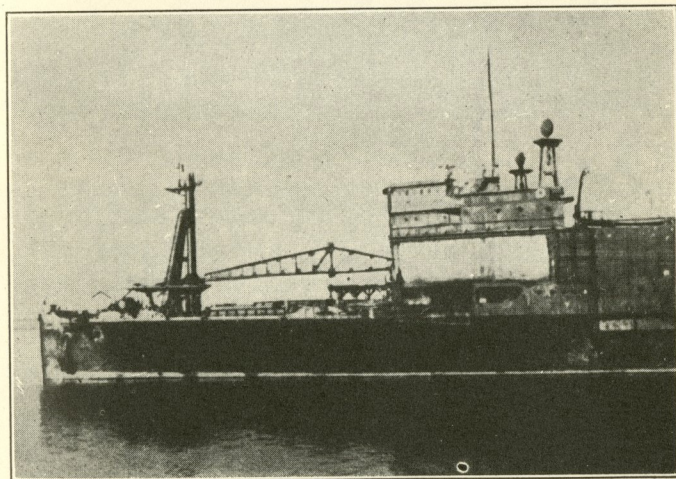


PLATE 76.—Special Military Landing Craft Carrier.  
Main derrick—Fore-hatch—Portion of temporary wooden platform  
starboard side, canvas screen covering entrance to superstructure.

## JAPANESE MILITARY LANDING CRAFT CARRIER

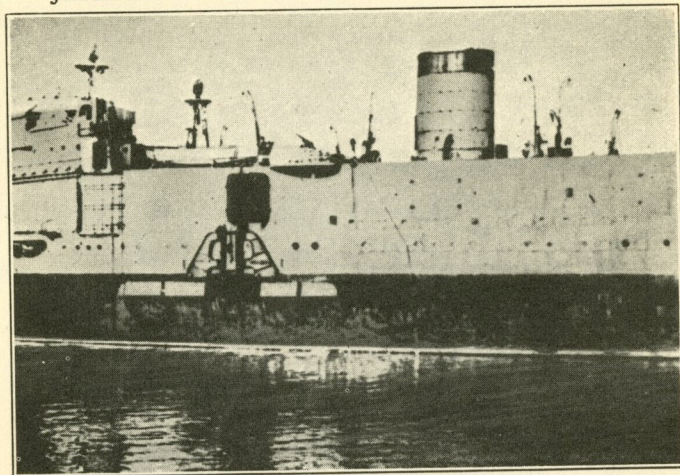


PLATE 77.—Military Landing Craft.

Main side doors with structure above for hoisting outboard heavy material. Plate 79 illustrates details of mechanism.

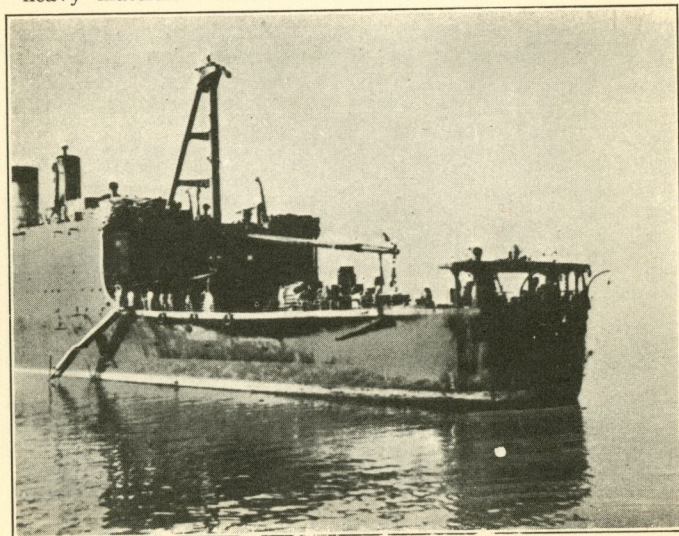


PLATE 78.—Military Landing Craft.  
After Deck and Stern Doors.

## JAPANESE MILITARY LANDING CRAFT CARRIER

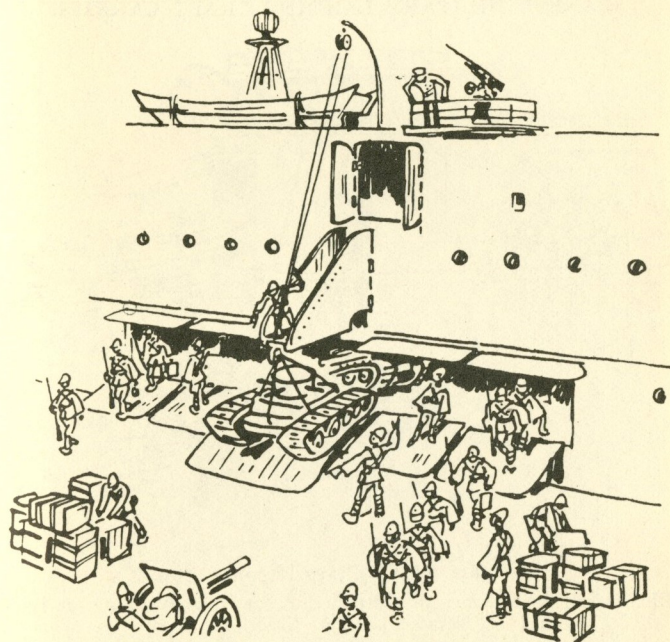


PLATE 79.—Military Landing Craft.

Illustrating method of disembarking heavy material, troops and stores, with the help alongside a jetty.

JAPANESE MILITARY LANDING CRAFT CARRIER

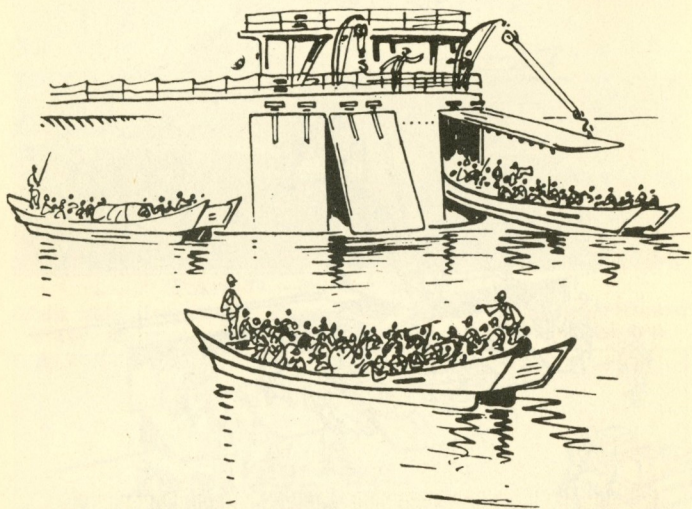


PLATE 80.—Military Landing Craft.

Illustrating operation of sterndoors for disembarking fully loaded Landing Craft.

BRIDGING EQUIPMENT



PLATE 81.—Bridging Equipment.  
Pontoon Bridging Equipment.

## BRIDGING EQUIPMENT

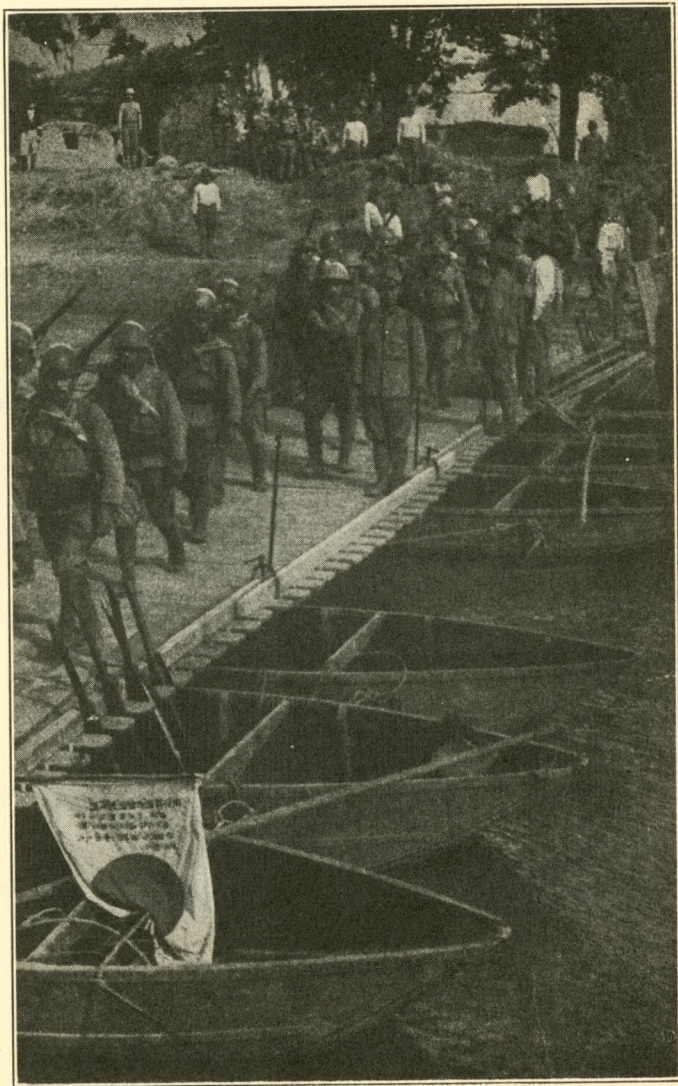


PLATE 82.—Folding Boat Equipment.  
Sino-Jap. hostilities, 1937.

## BRIDGING EQUIPMENT

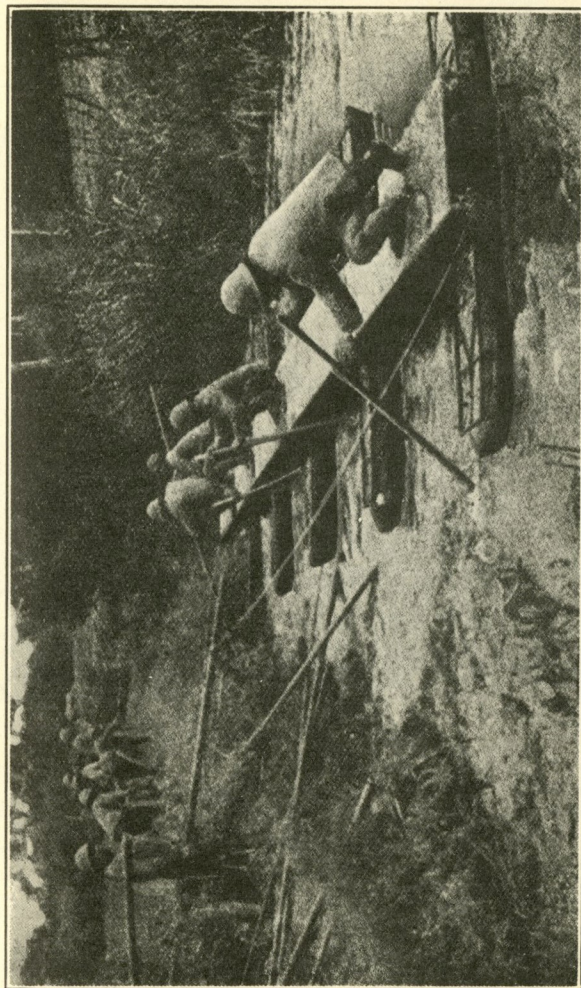


PLATE 83.—Bridging Equipment. Assault Bridging Equipment.

## BRIDGING EQUIPMENT

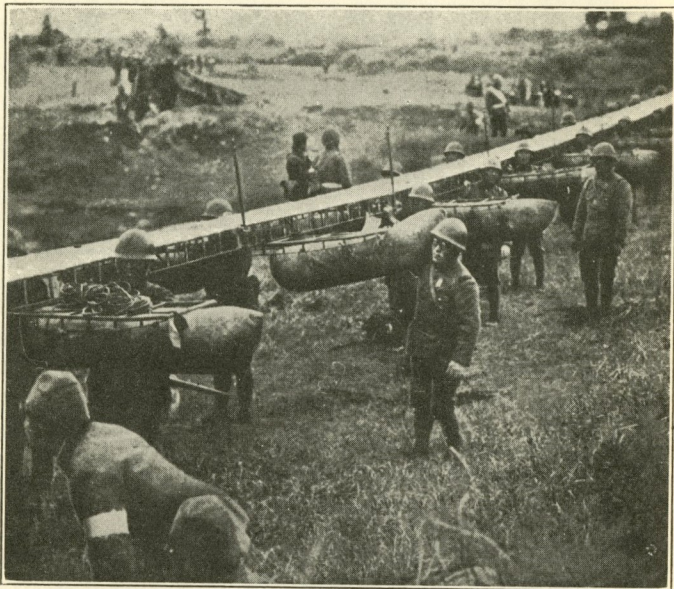


PLATE 84.—Assault Bridging.

The arrangements preparatory to launching and the method of launching appear to be generally the same as those used in the British Army. This type of assault bridge was used in the crossing of the Soochow Creek near Shanghai in November, 1937, and it is possible that, under favourable conditions, gaps of up to 200 ft. can be crossed by these means, as compared with our own maximum of 150 ft.

## BRIDGING EQUIPMENT

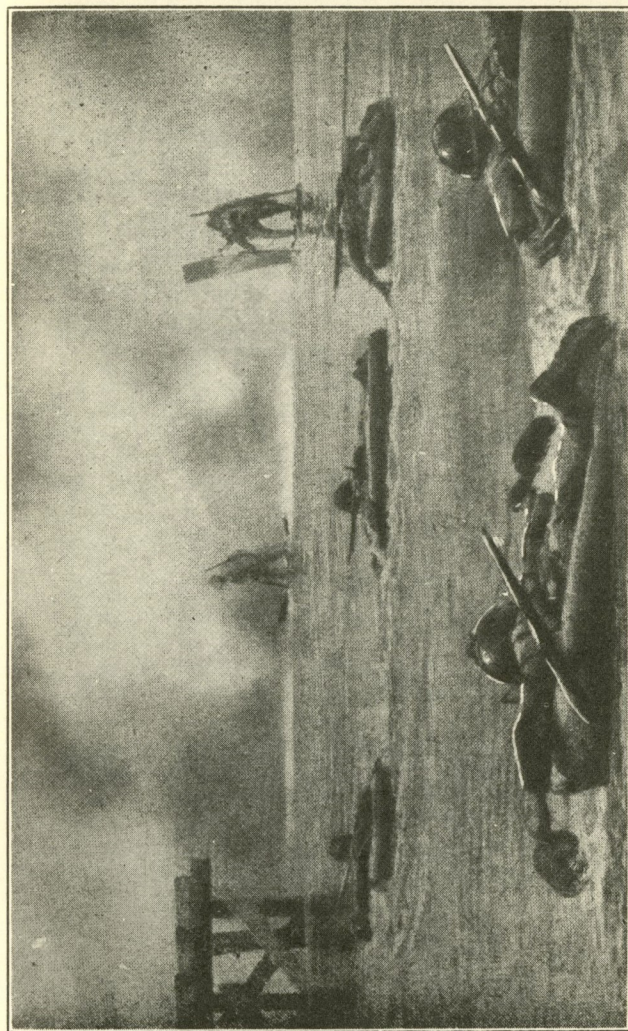


PLATE 85—Bridging Equipment.  
One-man float used in the Japanese Army for crossing rivers under fire.

BRIDGING EQUIPMENT.

60

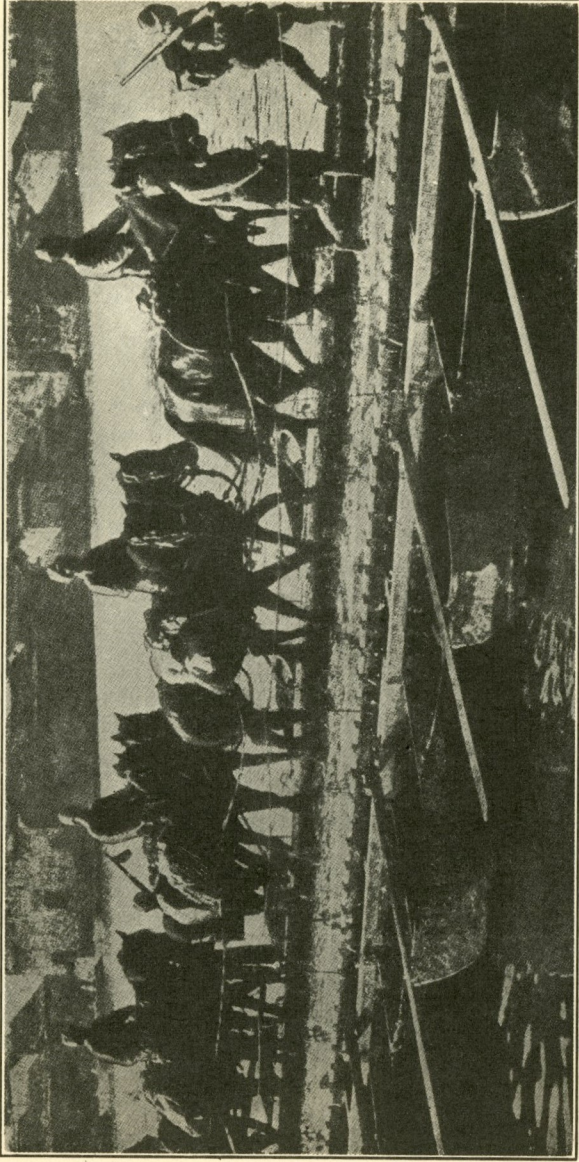


PLATE 86.—Artillery crossing Pontoon Bridge.  
Note the long paddles for propelling pontoons.

61

BRIDGING EQUIPMENT

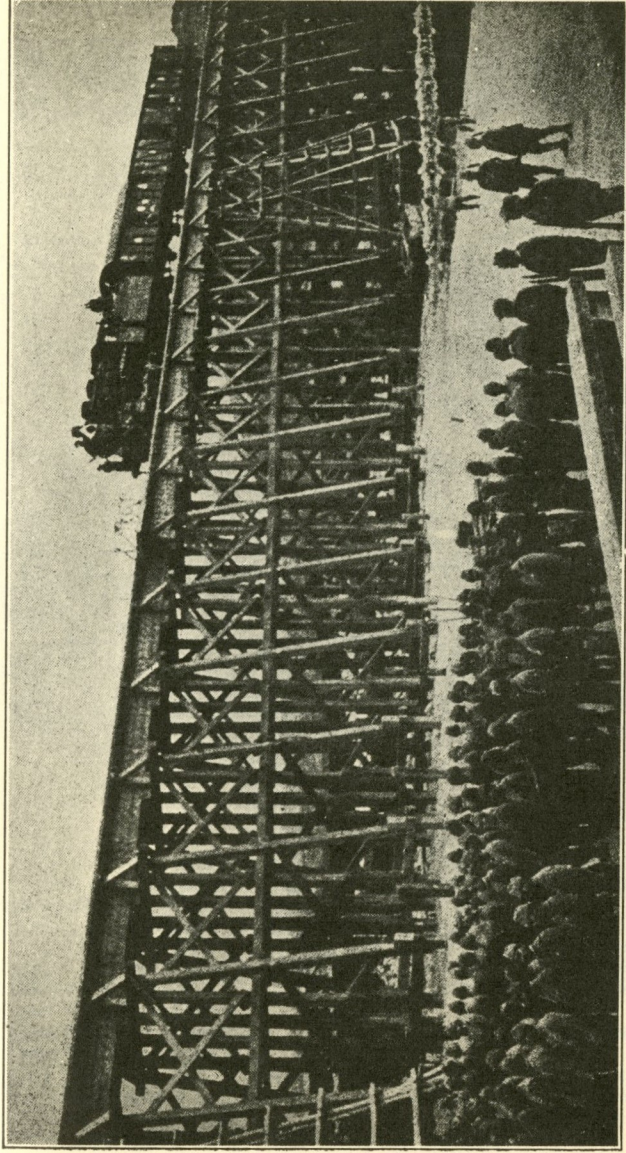


PLATE 87.—Bridge erected by Army Engineers to replace one destroyed. Japanese Engineers have displayed a high standard of skill in wooden bridge construction.



## WIRELESS EQUIPMENT



PLATE 88.—Wireless Equipment

Naval Landing Party with portable W/T.

Note Khaki uniform.

Wave length	... ..	Short.
Functions	... ..	Transmitting and receiving messages and telephony.
Length of transmitting wave	... ..	4 to 15 m.
Length of receiving wave	... ..	4 to 15 m.
Maximum transmitting radius	... ..	Telegrams 39-40 kms. Telephone 19-20 kms.
Maximum receiving radius	... ..	Telegrams 78-80 kms. Telephone 39-40 kms
Time required to prepare apparatus for action	... ..	3 to 4 minutes.
Source of power	... ..	Dry battery.

## TRANSPORT

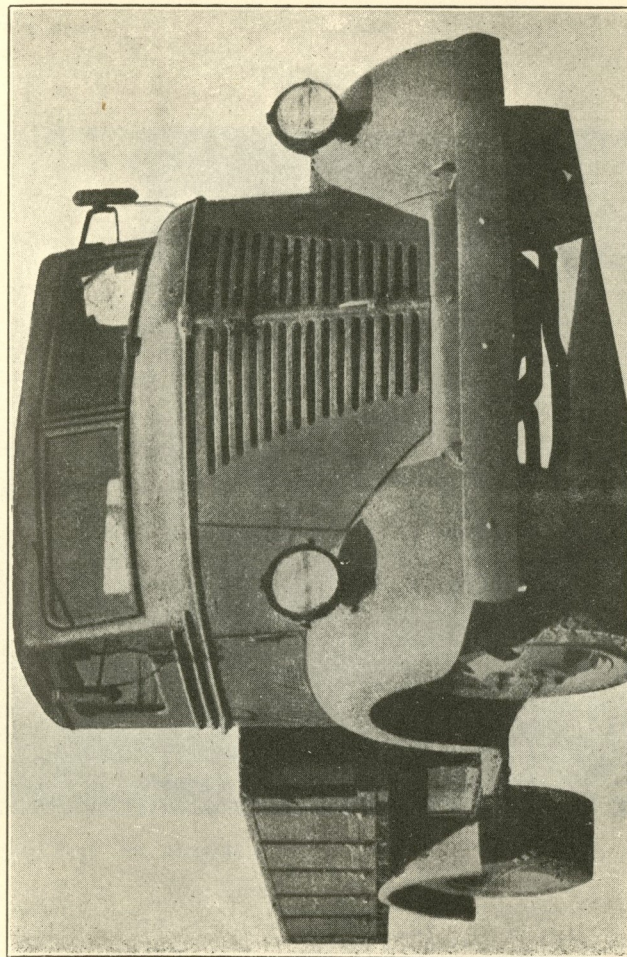


PLATE 89.—Typical Army Lorry. All-steel body. Japanese manufacture

## TRANSPORT

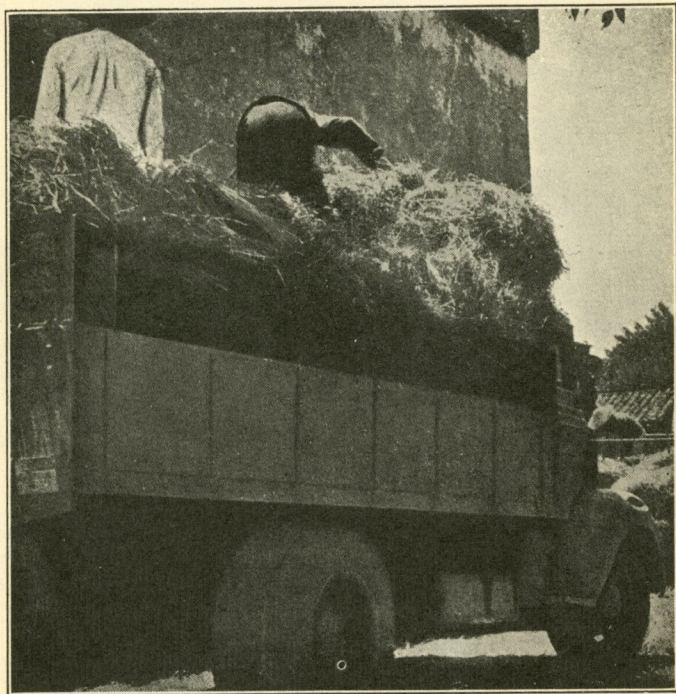


PLATE 90.—Army Lorry. Japanese manufacture, with steel body.

3. Page 7.—For detail under Plate 11 *substitute* :—

Amdt. 1  
Oct., 1942

Plate 11.—6.5 mm. (.256 in.) M.G. " Taisho 3 " (1914).

Weight (with tripod) 127 lb.  
Maximum rate of fire 500 r.p.m.

4. Page 9.—For detail under Plate 13 *substitute* :—

Amdt. 1  
Oct., 1942

Plate 13.—90 mm. (3.54 in.) Mortar.

---

*Prepared under the direction of  
The Chief of the Imperial General Staff.*

THE WAR OFFICE,  
October, 1942.

*Crown Copyright Reserved*

**NOT TO BE PUBLISHED**

The information given in this document is not to be communicated, either directly or indirectly, to the Press or to any person not holding an official position in His Majesty's Service.

26/G.S. Publications/677

**THE JAPANESE ARMY IN PICTURES, 1942**

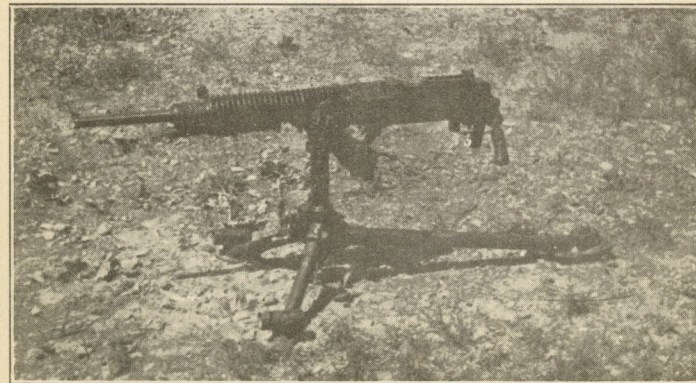
**AMENDMENTS (No. 1)**

1. Page 6.—For existing Plate 8 *substitute* the following :—



Amdt. 1  
Oct., 1942

2. Page 7.—For existing Plate 10 *substitute* the following :—



Amdt. 1  
Oct., 1942